

# **UK ECONOMIC INDICATORS**

## April 2008





## TABLE OF CONTENTS

Notes.....	1
Headline Changes .....	2
List of Tables.....	2
List of Charts.....	3
Economic Performance.....	4
Labour Market.....	24

### Notes

1. UK Indicators, to be produced on a quarterly basis by the South West RDA, is a compilation of regularly updated economic indicators outlining trends in the UK economy.

These indicators form part of a series of documents, comprising UK, Regional and Sub-regional Indicators.

Comments or questions regarding format or content are welcome and should be addressed to [Allison.McCaig@southwestrda.org.uk](mailto:Allison.McCaig@southwestrda.org.uk).

2. Crown copyright material is reproduced with the permission of the Controller of HMSO and the Queen's Printer for Scotland.
3. The following abbreviations are used for the UK and its regions throughout the report:

E	Eastern
EM	East Midlands
ENG	England
GB	Great Britain
L	London
NE	North East
NI	Northern Ireland
NW	North West
SC	Scotland
SE	South East
SW	South West
WAL	Wales
WM	West Midland
UK	United Kingdom
Y&H	Yorkshire and the Humber

## Headline Changes

### *Balance of payments – Table 6*

- The current balance in Q4 2007 was -£8.5bn, the lowest deficit for two and a half years and the first time for three years that figure has halved quarter on quarter. This was as a result of the income account moving back into surplus by £9.2bn after being in deficit by £2.4bn in the previous quarter. The main contributory factor behind the switch was the rise in the surplus of foreign direct investment which was likely to have been caused by major transactions between large companies. However it is important to note that this series can be volatile and as a result is likely to experience large fluctuations.

### *Inflation, interest and exchange rates – Tables 7-9*

- All measures of inflation recorded an annual rise in rates in the final quarter of 2007. Producer prices were especially high with input and output prices rising by 10.4% and 4.6% respectively, mainly as a consequence of the rising price of crude oil and other commodities.
- In response to the rising rate of inflation, the Bank of England cut the interest rate in December 2007 to 5.5% and in February 2008 to 5.25%.
- The pound weakened against the dollar in the 1<sup>st</sup> quarter of 2008 after a long period of appreciation which peaked at the end of 2007. Sterling also fell against the Euro after a sustained period of relative inertia which saw the Sterling Euro rate remain between 1.4 and 1.5 for four years. In the first quarter of 2008, one pound bought \$1.9574 and 1.3212 Euros.

### *Retail sales and household consumption expenditure Tables 10 & 11*

- In spite of increasing inflation and reports of an economic slowdown, retail sales have remained resilient. Between February 2007 and 2008, sales from all retailers increased by 5.5%. This was driven by predominantly non-food store sales which rose by 5.7% in 2007, while food store sales rose by 1.3% in the same period.
- The demand for non-durable goods has also remained positive but the level of household consumption expenditure for durable goods fell in the final quarter of 2007.

### *House prices – Table 13*

- There is clear evidence of a housing market contraction both nationally and in the South West of England (SWE). The United Kingdom as a whole saw annual house price growth fall from 11.3% at the beginning of 2007 to 1.2% at the beginning of 2008. In SWE, the contrast was even starker with a fall in house price growth from 14.3% to -3.3% in the same periods.

### *Consensus forecasts – Table 14*

- Forecast GDP growth for 2008 has been scaled down from 1.8% to 1.7% and it is set to fall to 1.6% in 2009. Inflation expectations (using the CPI measure) have increased from 2.2% to 2.5% in 2008, but are forecast to slow in 2009 to 2.1%.

### *Labour Market – Tables 15-21*

- Despite doom and gloom in the media and anticipation of economic recession, the latest national employment figures indicate a positive trend as the workforce continues to grow steadily. The sectors for financial services and catering displayed particularly high annual growth in jobs in Q4 2007, whilst conversely, the number of manufacturing employees continued to contract.
- SWE continues to boast the highest employment and unemployment rates in the United Kingdom at 79.3% and 3.7% of the working age population respectively (Q4 2007).
- Further to support the encouraging employment statistics, the monthly national claimant count rate was at its lowest it has been for at least a decade in March, at 2.5%. Again, SWE has the lowest regional figure of 1.4%, shared by the South East and North East of England.

## **List of Tables**

### *Economic Performance*

- Table 1a: Summary Indicators (£m)
- Table 1b: Summary Indicators – % Change
- Table 2a: GDP and GVA by Industry of Output (2003=100)
- Table 2b: GDP and GVA by Industry of Output - % Change
- Table 3a: GDP and GVA by Industry Output (2003=100)
- Table 3b: GDP and GVA by Industry Output – % Change
- Table 4: GVA by Region, current prices (£m)
- Table 5: GVA per Head by Region, current prices (£)
- Table 6: Balance of Payments (£m)
- Table 7: Inflation Rates – Annual and Quarterly % Change
- Table 8: Selected UK Financial Data
- Table 9: Exchange Rates of Selected Major Currencies
- Table 10: Retail Sales Index
- Table 11: Household Consumption Expenditure (£m)
- Table 12: Household Disposable Income & Gross Savings
- Table 13: Regional Standardised Index of House Prices (1983=100)
- Table 14: Consensus Forecasts

### *Labour Market*

- Table 15: UK Workforce Jobs by Industry ('000s and % Change)
- Table 16: Industry Share of UK Workforce Jobs (%)
- Table 17: Employment Rate (%)
- Table 18: Unemployment Rate (%)
- Table 19: Monthly UK Claimant Count Rate (%)
- Table 20: Monthly Claimant Count by Region (%)
- Table 21: Annual Claimant Count by Region
- Table 22: Average Earnings Index (2000=100)
- Table 23: Average Weekly Earnings of Full-Time Employees (£)
- Table 24: Annual Growth in Average Weekly Earnings (%)
- Table 25: Average Weekly Earnings for Male and Female Full-Time Employees (£)

## **List of Charts**

- Chart 1: Change in GVA and GDP by Industry Output
- Chart 2: Regional GVA 2001-2006, current prices (£bn)
- Chart 3: UK Trade Balance (£bn)
- Chart 4: Household Savings Ratio (%)
- Chart 5: Halifax House Price Index (1983=100)
- Chart 6: Industry Share of UK Workforce Jobs

## Economic Performance

**Table 1a: Summary Indicators (£m)**

	Real GDP	Household Expenditure	Government Expenditure	Investment	Exports	Imports	GDP Deflator 2003=100	Output per worker 2003=100
1999	1,003,370	606,648	205,853	169,117	247,289	257,809	90.9	93.5
2000	1,041,517	633,662	212,265	173,710	269,830	281,081	92.1	96.0
2001	1,066,217	653,326	217,359	178,203	277,694	294,449	94.1	97.2
2002	1,088,108	676,833	224,868	184,701	280,593	308,706	97.0	98.2
2003	1,118,245	697,160	232,699	186,700	285,397	314,842	100.0	100.0
2004	1,154,685	721,434	240,129	197,655	299,289	335,703	102.6	102.2
2005	1,175,916	732,005	246,527	200,654	323,749	359,626	104.9	103.1
2006	1,210,288	745,737	250,630	215,985	358,356	394,789	107.7	105.2
2007	1,246,895	768,397	255,315	229,423	339,434	383,162	111.1	..
2003 Q1	276,082	171,828	57,099	46,805	72,662	78,836	98.9	99.2
2003 Q2	277,686	174,146	57,684	46,131	70,610	77,283	99.8	99.3
2003 Q3	280,743	175,140	58,445	45,964	70,334	78,089	100.4	100.3
2003 Q4	283,734	176,046	59,471	47,800	71,791	80,634	100.9	101.3
2004 Q1	285,764	178,197	59,969	49,353	73,389	81,648	101.1	101.4
2004 Q2	288,357	180,362	59,530	49,159	74,861	83,313	102.3	102.3
2004 Q3	289,441	181,032	60,002	49,832	75,097	84,300	102.9	102.5
2004 Q4	291,123	181,843	60,628	49,311	75,942	86,442	103.9	102.6
2005 Q1	291,764	182,466	60,858	49,393	75,952	85,898	104.2	102.5
2005 Q2	293,078	182,306	61,613	49,334	79,576	87,920	104.9	102.9
2005 Q3	294,588	183,174	61,885	50,642	82,357	91,483	104.7	103.0
2005 Q4	296,486	184,059	62,171	51,285	85,864	94,325	106.0	103.9
2006 Q1	299,301	183,985	62,511	52,156	93,512	102,028	106.7	104.4
2006 Q2	301,371	186,369	62,342	52,872	95,747	104,683	107.0	105.0
2006 Q3	303,495	186,487	62,734	54,737	84,334	94,116	108.4	105.4
2006 Q4	306,121	188,896	63,043	56,220	84,763	93,962	108.9	106.1
2007 Q1	308,272	190,336	63,476	57,023	83,940	94,520	109.6	107.2
2007 Q2	310,888	191,607	63,791	56,331	84,512	93,872	111.1	107.7
2007 Q3	312,902	193,086	64,175	57,517	85,701	97,869	111.5	108.1
2007 Q4	314,833	193,368	63,873	58,552	85,281	96,901	112.1	..

Source: Economic & Labour Market review, ONS

Data are seasonally adjusted

**Table 1b: Summary Indicators - % Changes<sup>1</sup>**

	Real GDP		Household Expenditure		Government Expenditure		Investment		Exports		Imports		GDP Deflator 2003=100		Output per worker	
	Y	Q	Y	Q	Y	Q	Y	Q	Y	Q	Y	Q	Y	Q	Y	Q
1999	3.0	..	4.7	..	3.7	..	3.0	..	3.8	..	7.9	..	2.2	..	1.7	..
2000	3.8	..	4.5	..	3.1	..	2.7	..	9.1	..	9.0	..	1.3	..	2.6	..
2001	2.4	..	3.1	..	2.4	..	2.6	..	2.9	..	4.8	..	2.2	..	1.3	..
2002	2.1	..	3.6	..	3.5	..	3.6	..	1.0	..	4.8	..	3.1	..	1.0	..
2003	2.8	..	3.0	..	3.5	..	1.1	..	1.7	..	2.0	..	3.1	..	1.9	..
2004	3.3	..	3.5	..	3.2	..	5.9	..	4.9	..	6.6	..	2.6	..	2.2	..
2005	1.8	..	1.5	..	2.7	..	1.5	..	8.2	..	7.1	..	2.2	..	0.9	..
2006	2.9	..	1.9	..	1.7	..	7.6	..	10.7	..	9.8	..	2.7	..	2.1	..
2007	3.0	..	3.0	..	1.9	..	6.2	..	-5.3	..	-2.9	..	3.2	..	2.2	..
2003 Q1	2.4	0.6	2.5	0.6	2.4	1.2	5.0	-2.7	4.6	6.0	4.1	2.9	2.9	1.2	1.3	0.7
2003 Q2	2.5	0.6	3.2	1.3	2.5	1.0	1.1	-1.4	-1.3	-2.8	-1.4	-2.0	3.0	0.9	1.4	0.1
2003 Q3	2.8	1.1	3.2	0.6	3.6	1.3	-1.0	-0.4	-1.0	-0.4	0.1	1.0	3.1	0.6	1.8	1.0
2003 Q4	3.4	1.1	3.1	0.5	5.5	1.8	-0.6	4.0	4.7	2.1	5.2	3.3	3.3	0.5	2.9	1.0
2004 Q1	3.5	0.7	3.7	1.2	5.0	0.8	5.4	3.2	1.0	2.2	3.6	1.3	2.2	0.2	2.2	0.1
2004 Q2	3.8	0.9	3.6	1.2	3.2	-0.7	6.6	-0.4	6.0	2.0	7.8	2.0	2.5	1.2	3.1	0.9
2004 Q3	3.1	0.4	3.4	0.4	2.7	0.8	8.4	1.4	6.8	0.3	8.0	1.2	2.5	0.6	2.2	0.2
2004 Q4	2.6	0.6	3.3	0.4	1.9	1.0	3.2	-1.0	5.8	1.1	7.2	2.5	3.0	1.0	1.3	0.1
2005 Q1	2.1	0.2	2.4	0.3	1.5	0.4	0.1	0.2	3.5	0.0	5.2	-0.6	3.1	0.3	1.1	-0.1
2005 Q2	1.6	0.5	1.1	-0.1	3.5	1.2	0.4	-0.1	6.3	4.8	5.5	2.4	2.5	0.7	0.6	0.4
2005 Q3	1.8	0.5	1.2	0.5	3.1	0.4	1.6	2.7	9.7	3.5	8.5	4.1	1.7	-0.2	0.5	0.1
2005 Q4	1.8	0.6	1.2	0.5	2.5	0.5	4.0	1.3	13.1	4.3	9.1	3.1	2.0	1.2	1.3	0.9
2006 Q1	2.6	0.9	0.8	0.0	2.7	0.5	5.6	1.7	23.1	8.9	18.8	8.2	2.4	0.7	1.9	0.5
2006 Q2	2.8	0.7	2.2	1.3	1.2	-0.3	7.2	1.4	20.3	2.4	19.1	2.6	2.0	0.3	2.0	0.6
2006 Q3	3.0	0.7	1.8	0.1	1.4	0.6	8.1	3.5	2.4	-11.9	2.9	-10.1	3.5	1.3	2.4	0.4
2006 Q4	3.2	0.9	2.6	1.3	1.4	0.5	9.6	2.7	-1.3	0.5	-0.4	-0.2	2.7	0.5	2.1	0.7
2007 Q1	3.0	0.7	3.5	0.8	1.5	0.7	9.3	1.4	-10.2	-1.0	-7.4	0.6	2.7	0.6	2.5	1.0
2007 Q2	3.2	0.8	2.8	0.7	2.3	0.5	6.5	-1.2	-11.7	0.7	-10.3	-0.7	3.8	1.4	2.5	0.5
2007 Q3	3.1	0.6	3.5	0.8	2.3	0.6	5.1	2.1	1.6	1.4	4.0	4.3	2.9	0.4	2.3	0.4
2007 Q4	2.8	0.6	2.4	0.1	1.3	-0.5	4.1	1.8	0.6	-0.5	3.1	-1.0	2.9	0.5	1.7	..

Source: Economic & Labour Market Review, ONS; Data are seasonally adjusted

<sup>1</sup> Y represents annual change for yearly data and quarter on same quarter in previous year for quarterly data. Q represents percentage change from previous quarter.

**Table 2a: GDP and GVA by Industry of Output (2003=100)**

	Agriculture	Production Industries	Construction	Service Industries	Real GDP
1999	101.1	101.9	89.8	87.2	89.7
2000	100.3	103.8	90.2	91.3	93.1
2001	90.9	102.3	92.2	94.5	95.3
2002	102.1	100.3	95.5	96.9	97.3
2003	100.0	100.0	100.0	100.0	100.0
2004	99.0	100.8	104.0	103.9	103.3
2005	103.3	98.8	105.6	106.9	105.2
2006	106.0	98.9	106.7	110.8	108.2
2007	107.0	99.3	110.2	114.9	111.6
2001 Q1	91.6	104.0	91.5	93.7	94.9
2001 Q2	90.2	102.5	91.7	94.1	95.0
2001 Q3	89.8	102.4	92.3	94.7	95.6
2001 Q4	92.1	100.5	93.3	95.4	95.9
2002 Q1	101.0	100.5	94.8	95.9	96.4
2002 Q2	102.6	100.5	94.4	96.5	97.0
2002 Q3	102.8	100.2	95.8	97.4	97.7
2002 Q4	102.0	100.2	97.0	98.0	98.2
2003 Q1	99.7	99.9	97.0	98.6	98.8
2003 Q2	99.3	99.4	98.9	99.3	99.3
2003 Q3	100.1	100.0	101.7	100.4	100.4
2003 Q4	100.9	100.8	102.4	101.7	101.5
2004 Q1	99.1	100.9	102.8	102.5	102.2
2004 Q2	98.3	101.3	103.4	103.6	103.1
2004 Q3	99.3	100.3	104.4	104.3	103.5
2004 Q4	99.2	100.6	105.4	105.0	104.1
2005 Q1	101.3	99.6	106.0	105.6	104.4
2005 Q2	102.9	99.2	106.4	106.3	104.8
2005 Q3	103.8	98.5	105.0	107.2	105.4
2005 Q4	105.2	97.9	104.8	108.4	106.1
2006 Q1	105.6	98.9	106.0	109.4	107.0
2006 Q2	105.9	98.8	106.0	110.4	107.8
2006 Q3	106.7	99.0	107.0	111.1	108.5
2006 Q4	105.8	98.8	108.0	112.4	109.5
2007 Q1	107.0	98.7	109.0	113.6	110.4
2007 Q2	107.0	99.4	109.8	114.5	111.3
2007 Q3	106.3	99.4	110.7	115.4	112.0
2007 Q4	107.7	99.6	111.5	116.2	112.7

Source: ONS

Data are seasonally adjusted

**Table 2b: GDP and GVA by Industry Output - % Changes<sup>1</sup>**

	Agriculture		Production		Construction		Service		Real GDP	
	Y	Q	Y	Q	Y	Q	Y	Q	Y	Q
2000	-0.8	..	1.9	..	0.4	..	4.7	..	3.8	..
2001	-9.4	..	-1.5	..	2.3	..	3.5	..	2.4	..
2002	12.3	..	-1.9	..	3.6	..	2.6	..	2.1	..
2003	-2.1	..	-0.3	..	4.7	..	3.2	..	2.8	..
2004	-1.0	..	0.8	..	4.0	..	3.9	..	3.3	..
2005	4.4	..	-2.0	..	1.5	..	2.9	..	1.8	..
2006	2.6	..	0.1	..	1.1	..	3.7	..	2.9	..
2007	0.9	..	0.4	..	3.3	..	3.7	..	3.1	..
2001 Q1	-9.4	-6.5	0.4	-0.1	-0.7	1.7	4.3	1.2	2.9	0.9
2001 Q2	-10.3	-1.6	-1.5	-1.4	2.1	0.3	3.5	0.5	2.3	0.1
2001 Q3	-11.6	-0.4	-1.3	-0.1	3.9	0.6	2.9	0.6	2.3	0.6
2001 Q4	-6.0	2.5	-3.4	-1.9	3.8	1.2	3.1	0.7	2.1	0.4
2002 Q1	10.3	9.7	-3.4	0.0	3.6	1.6	2.4	0.5	1.6	0.5
2002 Q2	13.7	1.6	-2.0	0.0	2.9	-0.4	2.5	0.6	2.1	0.5
2002 Q3	14.5	0.2	-2.1	-0.2	3.8	1.5	2.8	0.9	2.2	0.7
2002 Q4	10.7	-0.8	-0.3	0.0	4.0	1.2	2.8	0.7	2.3	0.5
2003 Q1	-1.3	-2.3	-0.6	-0.3	2.3	0.0	2.9	0.6	2.4	0.6
2003 Q2	-3.2	-0.4	-1.1	-0.5	4.8	1.9	2.9	0.7	2.5	0.6
2003 Q3	-2.6	0.8	-0.2	0.6	6.2	2.9	3.1	1.1	2.8	1.1
2003 Q4	-1.1	0.9	0.6	0.8	5.6	0.7	3.8	1.3	3.4	1.1
2004 Q1	-0.6	-1.8	1.0	0.1	6.0	0.3	3.9	0.8	3.5	0.7
2004 Q2	-1.0	-0.8	1.9	0.4	4.6	0.6	4.3	1.1	3.8	0.9
2004 Q3	-0.8	1.0	0.3	-1.0	2.7	1.0	3.9	0.6	3.1	0.4
2004 Q4	-1.7	-0.1	-0.2	0.3	2.9	1.0	3.3	0.7	2.6	0.6
2005 Q1	2.2	2.1	-1.3	-1.0	3.1	0.5	3.0	0.5	2.1	0.2
2005 Q2	4.7	1.6	-2.1	-0.4	2.9	0.3	2.6	0.7	1.6	0.5
2005 Q3	4.5	0.9	-1.8	-0.7	0.6	-1.3	2.9	0.9	1.8	0.5
2005 Q4	6.0	1.3	-2.7	-0.7	-0.6	-0.2	3.2	1.1	1.8	0.6
2006 Q1	4.2	0.4	-0.7	1.0	0.0	1.1	3.6	0.9	2.6	0.9
2006 Q2	2.9	0.4	-0.4	0.0	-0.4	0.0	3.9	0.9	2.9	0.7
2006 Q3	2.8	0.8	0.5	0.2	1.9	0.9	3.6	0.6	3.0	0.6
2006 Q4	0.6	-0.9	0.9	-0.2	3.1	1.0	3.7	1.2	3.3	1.0
2007 Q1	1.3	1.1	-0.2	-0.2	2.8	0.9	3.8	1.0	3.1	0.8
2007 Q2	1.0	0.0	0.6	0.7	3.6	0.8	3.8	0.8	3.2	0.8
2007 Q3	-0.4	-0.6	0.4	0.0	3.5	0.8	3.9	0.8	3.3	0.7
2007 Q4	1.8	1.3	0.8	0.3	3.2	0.7	3.4	0.7	2.9	0.6

Source: Gross Value Added, ONS

<sup>1</sup> Y represents annual change for yearly data and quarter on same quarter in previous year for quarterly data. Q represents percentage change from previous quarter.

Data are seasonally adjusted

**Table 3a: GDP and GVA by Industry of Output - Chained Volume Indices (2003=100)**

	Production					Service Industries					Total	Real GDP
	Agriculture, hunting, forestry & fishing	Mining & quarrying, inc. oil & gas extraction	Manufacturing	Electricity, gas & water supply	Total	Construction	Distribution, hotels & catering; repairs	Transport, storage & communication	Business services & finance	Other services		
2001	90.9	105.0	102.5	98.0	102.3	92.2	92.1	97.0	94.4	95.3	94.5	95.3
2002	102.1	105.4	99.8	98.4	100.3	95.5	96.4	98.2	96.3	97.7	96.9	97.3
2003	100.0	100.0	100.0	100.0	100.0	100.0	100.0	100.0	100.0	100.0	100.0	100.0
2004	99.0	92.1	102.0	101.1	100.8	104.0	105.2	102.5	105.1	102.0	103.9	103.3
2005	103.3	83.7	100.8	100.7	98.8	105.6	106.4	106.9	109.7	103.8	106.9	105.2
2006	106.0	76.7	102.3	98.2	98.9	106.7	110.0	111.2	115.6	105.6	110.8	108.2
2007	107.0	75.7	102.9	98.1	99.3	110.2	114.3	117.7	120.9	107.4	114.9	111.6
2003 Q1	99.7	105.0	99.3	98.1	99.9	97.0	98.2	99.2	98.5	98.8	98.6	98.8
2003 Q2	99.3	99.8	99.4	98.9	99.4	98.9	99.4	99.8	98.9	99.5	99.3	99.3
2003 Q3	100.1	98.9	100.0	100.6	100.0	101.7	100.6	100.3	100.4	100.3	100.4	100.4
2003 Q4	100.9	96.3	101.3	102.3	100.8	102.4	101.8	100.7	102.2	101.3	101.7	101.5
2004 Q1	99.1	94.3	101.7	102.2	100.9	102.8	103.6	100.7	103.4	101.4	102.5	102.2
2004 Q2	98.3	94.8	102.4	100.7	101.3	103.4	105.2	102.2	104.3	102.2	103.6	103.1
2004 Q3	99.3	90.9	101.6	101.0	100.3	104.4	106.0	103.1	105.6	102.0	104.3	103.5
2004 Q4	99.2	88.6	102.4	100.6	100.6	105.4	105.9	104.1	106.9	102.5	105.0	104.1
2005 Q1	101.3	86.8	101.5	99.8	99.6	106.0	105.8	105.9	107.7	102.8	105.6	104.4
2005 Q2	102.9	86.8	100.8	101.6	99.2	106.4	105.7	106.0	109.1	103.5	106.3	104.8
2005 Q3	103.8	80.5	100.9	101.0	98.5	105.0	106.4	106.8	110.3	104.3	107.2	105.4
2005 Q4	105.2	80.6	100.2	100.4	97.9	104.8	107.8	108.9	111.9	104.6	108.4	106.1
2006 Q1	105.6	80.7	101.4	100.7	98.9	106.0	108.5	109.0	113.7	105.0	109.4	107.0
2006 Q2	105.9	77.1	102.2	98.1	98.8	106.0	109.7	110.7	115.0	105.3	110.4	107.8
2006 Q3	106.7	75.3	102.7	97.9	99.0	107.0	109.9	111.4	116.1	105.8	111.1	108.5
2006 Q4	105.8	73.9	102.9	96.0	98.8	108.0	111.8	113.7	117.6	106.3	112.4	109.5
2007 Q1	107.0	75.3	102.3	97.3	98.7	109.0	112.9	116.0	118.8	107.0	113.6	110.4
2007 Q2	107.0	76.1	103.1	97.2	99.4	109.8	113.8	117.1	120.4	107.1	114.5	111.3
2007 Q3	106.3	75.3	103.1	98.0	99.4	110.7	114.7	117.7	122.0	107.4	115.4	112.0
2007 Q4	107.7	76.1	103.1	99.7	99.6	111.5	115.8	120.0	122.5	108.0	116.2	112.7

Source: Gross Value Added, ONS

Data are seasonally adjusted

Table 3b: GDP and GVA by Industry of Output - Annual<sup>1</sup> (Y) and Quarterly (Q) % Changes

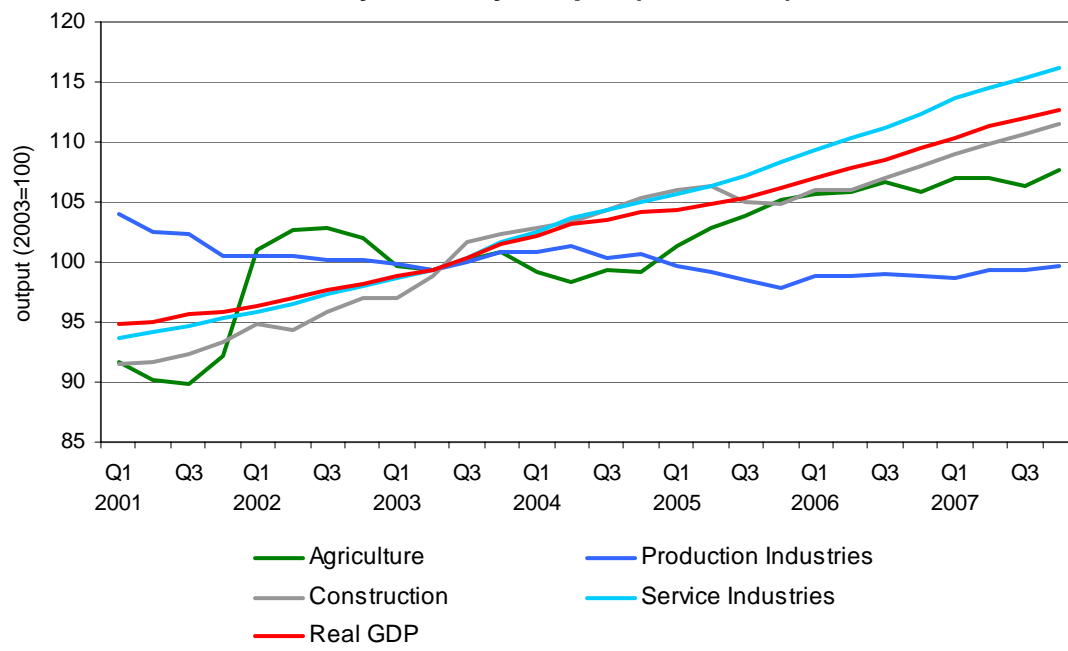
	Production										Service Industries										Real GDP			
	Agriculture, hunting, forestry & fishing		Mining & quarrying, inc. oil & gas extraction		Manufacturing		Electricity, gas & water supply		Total		Construction		Distribution, hotels & catering; repairs		Transport, storage & communication		Business services & finance		Other services			Total		
	Y	Q	Y	Q	Y	Q	Y	Q	Y	Q	Y	Q	Y	Q	Y	Q	Y	Q	Y	Q		Y	Q	Y
2001	-9.4	..	-5.5	..	-1.3	..	3.2	..	-1.5	..	2.3	..	3.4	..	4.5	..	4.1	..	2.3	..	3.5	..	2.4	..
2002	12.3	..	0.4	..	-2.6	..	0.4	..	-1.9	..	3.6	..	4.6	..	1.2	..	2.0	..	2.5	..	2.6	..	2.1	..
2003	-2.1	..	-5.1	..	0.2	..	1.6	..	-0.3	..	4.7	..	3.8	..	1.9	..	3.9	..	2.4	..	3.2	..	2.8	..
2004	-1.0	..	-7.9	..	2.0	..	1.1	..	0.8	..	4.0	..	5.2	..	2.5	..	5.1	..	2.0	..	3.9	..	3.3	..
2005	4.4	..	-9.2	..	-1.2	..	-0.4	..	-2.0	..	1.5	..	1.2	..	4.3	..	4.4	..	1.8	..	2.9	..	1.8	..
2006	2.6	..	-8.3	..	1.4	..	-2.5	..	0.1	..	1.1	..	3.3	..	4.0	..	5.3	..	1.8	..	3.7	..	2.9	..
2007	0.9	..	-1.4	..	0.6	..	-0.1	..	0.4	..	3.3	..	4.0	..	5.8	..	4.6	..	1.7	..	3.7	..	3.1	..
2003 Q1	-1.3	-2.3	-0.4	-0.7	-0.9	-0.1	0.9	-1.5	-0.6	-0.3	2.3	0.0	3.0	0.3	1.2	-0.2	4.0	1.2	2.0	0.5	2.9	0.6	2.4	0.6
2003 Q2	-3.2	-0.4	-8.9	-4.9	0.0	0.0	1.3	0.8	-1.1	-0.5	4.8	1.9	4.1	1.2	3.0	0.7	2.9	0.4	2.1	0.7	2.9	0.7	2.5	0.6
2003 Q3	-2.6	0.8	-2.1	-0.9	-0.3	0.7	1.4	1.7	-0.2	0.6	6.2	2.9	4.0	1.2	1.9	0.5	3.5	1.5	2.5	0.8	3.1	1.1	2.8	1.1
2003 Q4	-1.1	0.9	-8.9	-2.6	1.9	1.2	2.6	1.7	0.6	0.8	5.6	0.7	3.9	1.3	1.4	0.4	5.0	1.8	3.1	1.0	3.8	1.3	3.4	1.1
2004 Q1	-0.6	-1.8	-10.2	-2.1	2.4	0.4	4.2	-0.1	1.0	0.1	6.0	0.3	5.5	1.7	1.5	0.0	5.0	1.2	2.6	0.0	3.9	0.8	3.5	0.7
2004 Q2	-1.0	-0.8	-5.0	0.5	3.0	0.7	1.8	-1.6	1.9	0.4	4.6	0.6	5.8	1.5	2.4	1.6	5.5	0.9	2.7	0.8	4.3	1.1	3.8	0.9
2004 Q3	-0.8	1.0	-8.1	-4.1	1.6	-0.7	0.4	0.3	0.3	-1.0	2.7	1.0	5.4	0.8	2.8	0.9	5.2	1.2	1.7	-0.2	3.9	0.6	3.1	0.4
2004 Q4	-1.7	-0.1	-8.0	-2.6	1.1	0.7	-1.7	-0.4	-0.2	0.3	2.9	1.0	4.0	0.0	3.4	1.0	4.6	1.2	1.2	0.5	3.3	0.7	2.6	0.6
2005 Q1	2.2	2.1	-8.0	-2.0	-0.2	-0.9	-2.3	-0.8	-1.3	-1.0	3.1	0.5	2.1	-0.1	5.2	1.7	4.2	0.8	1.4	0.3	3.0	0.5	2.1	0.2
2005 Q2	4.7	1.6	-8.4	0.0	-1.6	-0.7	0.9	1.8	-2.1	-0.4	2.9	0.3	0.5	-0.1	3.7	0.0	4.6	1.3	1.3	0.6	2.6	0.7	1.6	0.5
2005 Q3	4.5	0.9	-11.4	-7.2	-0.7	0.1	0.0	-0.5	-1.8	-0.7	0.6	-1.3	0.4	0.7	3.6	0.8	4.5	1.1	2.3	0.8	2.9	0.9	1.8	0.5
2005 Q4	6.0	1.3	-9.0	0.0	-2.1	-0.7	-0.2	-0.7	-2.7	-0.7	-0.6	-0.2	1.8	1.2	4.6	2.0	4.7	1.4	2.0	0.2	3.2	1.1	1.8	0.6
2006 Q1	4.2	0.4	-7.0	0.1	-0.1	1.2	0.9	0.3	-0.7	1.0	0.0	1.1	2.6	0.7	2.9	0.1	5.6	1.6	2.1	0.4	3.6	0.9	2.6	0.9
2006 Q2	2.9	0.4	-11.2	-4.4	1.4	0.8	-3.4	-2.6	-0.4	0.0	-0.4	0.0	3.8	1.1	4.4	1.5	5.4	1.2	1.7	0.3	3.9	0.9	2.9	0.7
2006 Q3	2.8	0.8	-6.5	-2.3	1.8	0.5	-3.1	-0.2	0.5	0.2	1.9	0.9	3.3	0.2	4.3	0.6	5.3	1.0	1.4	0.5	3.6	0.6	3.0	0.6
2006 Q4	0.6	-0.9	-8.3	-1.9	2.7	0.1	-4.4	-1.9	0.9	-0.2	3.1	1.0	3.7	1.8	4.4	2.1	5.1	1.3	1.6	0.5	3.7	1.2	3.3	1.0
2007 Q1	1.3	1.1	-6.7	1.9	0.9	-0.5	-3.4	1.4	-0.2	-0.2	2.8	0.9	4.1	1.0	6.4	2.0	4.5	1.0	1.9	0.6	3.8	1.0	3.1	0.8
2007 Q2	1.0	0.0	-1.3	1.1	0.9	0.8	-0.9	-0.1	0.6	0.7	3.6	0.8	3.7	0.8	5.8	1.0	4.7	1.4	1.7	0.1	3.8	0.8	3.2	0.8
2007 Q3	-0.4	-0.6	0.0	-1.1	0.4	0.0	0.1	0.8	0.4	0.0	3.5	0.8	4.4	0.8	5.7	0.5	5.1	1.3	1.5	0.3	3.9	0.8	3.3	0.7
2007 Q4	1.8	1.3	3.0	1.1	0.2	0.0	3.9	1.7	0.8	0.3	3.2	0.7	3.6	1.0	5.5	1.9	4.2	0.4	1.6	0.5	3.4	0.7	2.9	0.6

<sup>1</sup> Y represents annual change for yearly data and quarter on same quarter in previous year for quarterly data. Q represents percentage change from previous quarter.

Source: Gross Value Added, ONS

Data are seasonally adjusted

**Chart 1: GVA and GDP by Industry Output (2003=100)**



**Table 4: GVA by Region, current prices (£m)<sup>1,2</sup>**

	1998	1999	2000	2001	2002	2003	2004	2005	2006 <sup>3</sup>
UK <sup>4</sup>	756,020	791,720	824,775	868,373	917,233	973,512	1,031,362	1,073,891	1,128,790
NE	26,576	27,344	28,251	29,609	31,054	32,934	35,058	36,763	38,788
NW	78,226	81,402	84,308	88,435	92,639	97,707	103,035	106,501	111,252
YH	57,014	58,897	61,034	64,192	67,802	71,813	75,823	78,513	82,116
EM	49,774	51,520	53,396	56,477	59,734	63,744	67,755	70,569	74,113
WM	63,129	65,442	67,786	70,973	74,109	77,828	81,791	84,758	88,997
E	73,822	77,821	81,945	86,772	91,136	96,374	101,461	104,987	109,884
L	120,947	128,981	134,720	141,752	153,363	164,931	176,764	186,238	196,764
SE	117,857	124,956	131,125	138,723	145,482	153,782	162,314	168,624	177,224
<b>SW</b>	<b>58,187</b>	<b>61,136</b>	<b>63,915</b>	<b>67,771</b>	<b>71,809</b>	<b>76,605</b>	<b>81,551</b>	<b>84,889</b>	<b>89,501</b>
ENG	645,530	677,499	706,481	744,704	787,128	835,718	885,551	921,842	968,639
WAL	29,787	30,736	31,898	33,525	35,252	37,262	39,340	40,711	42,697
SCO	63,178	65,109	67,186	69,994	73,689	78,066	82,538	86,321	91,024
NI	17,526	18,377	19,210	20,150	21,164	22,466	23,933	25,017	26,429

Source: Office for National Statistics

<sup>1</sup> The headline regional GVA series for this publication have been calculated using a five-period moving average.

<sup>2</sup> Estimates of regional GVA in this table are on a residence basis, where the income of commuters is allocated to where they live rather than their place of work.

<sup>3</sup> Provisional

<sup>4</sup> Excluding Extra-Region and statistical discrepancy. The GDP for Extra-Region includes the compensation of employees and gross operating surplus which cannot be assigned to regions.

**Table 5: GVA per head by Region, current prices (£)<sup>1,2</sup>**

	1998	1999	2000	2001	2002	2003	2004	2005	2006 <sup>3</sup>
UK <sup>4</sup>	12,929	13,491	14,006	14,690	15,462	16,346	17,234	17,827	18,631
NE	10,378	10,722	11,108	11,657	12,221	12,959	13,791	14,419	15,177
NW	11,517	12,018	12,445	13,057	13,667	14,368	15,109	15,571	16,234
YH	11,500	11,883	12,309	12,899	13,555	14,284	14,973	15,372	15,968
EM	12,044	12,407	12,811	13,480	14,150	14,984	15,789	16,307	16,982
WM	11,976	12,413	12,864	13,440	13,996	14,652	15,355	15,841	16,583
E	13,923	14,577	15,246	16,067	16,775	17,603	18,411	18,872	19,599
L	17,118	18,029	18,616	19,359	20,833	22,397	23,922	24,978	26,192
SE	14,940	15,708	16,410	17,290	18,079	19,016	19,977	20,603	21,514
<b>SW</b>	<b>11,999</b>	<b>12,525</b>	<b>12,999</b>	<b>13,709</b>	<b>14,439</b>	<b>15,306</b>	<b>16,175</b>	<b>16,688</b>	<b>17,467</b>
ENG	13,222	13,817	14,350	15,060	15,853	16,759	17,672	18,267	19,082
WAL	10,273	10,596	10,973	11,520	12,074	12,712	13,352	13,784	14,396
SCO	12,444	12,837	13,270	13,821	14,578	15,436	16,253	16,943	17,789
NI	10,446	10,945	11,415	11,928	12,474	13,195	13,993	14,508	15,175

Source: Office for National Statistics

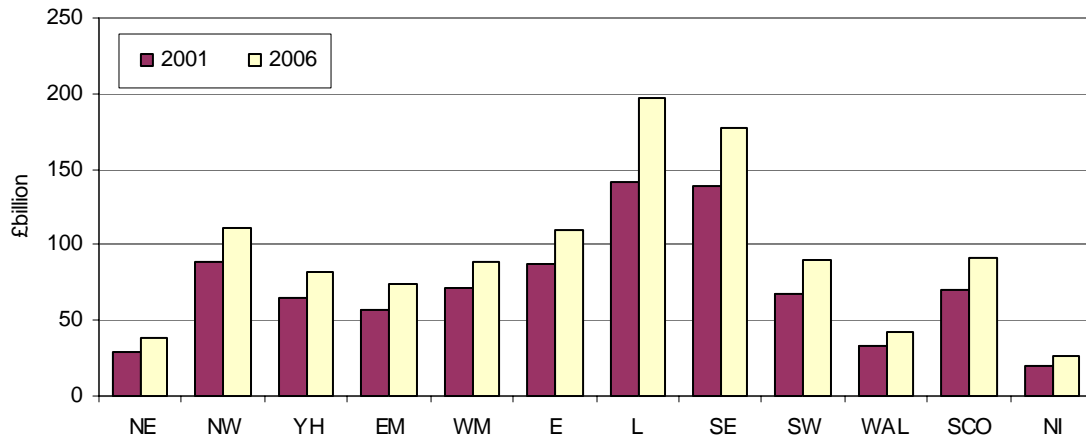
<sup>1</sup> The headline regional GVA series for this publication have been calculated using a five-period moving average.

<sup>2</sup> Estimates of regional GVA in this table are on a residence basis, where the income of commuters is allocated to where they live rather than their place of work.

<sup>3</sup> Provisional

<sup>4</sup> Excluding Extra-Region and statistical discrepancy. The GDP for Extra-Region includes the compensation of employees and gross operating surplus which cannot be assigned to regions.

**Chart 2: Regional GVA, 2001-2006 (£bn)**



Source: Regional GVA, ONS

**Table 6: Balance of Payments (£m)**

	<b>Trade in Goods</b>	<b>Trade in Services</b>	<b>Total Trade</b>	<b>Current Balance</b>
1997	-12,342	14,106	1,764	-840
1998	-21,813	14,672	-7,141	-3,195
1999	-29,051	13,597	-15,454	-21,717
2000	-32,976	13,615	-19,361	-24,833
2001	-41,212	14,423	-26,789	-21,884
2002	-47,705	16,830	-30,875	-16,513
2003	-48,607	19,162	-29,445	-14,921
2004	-60,893	25,918	-34,975	-19,328
2005	-68,789	24,611	-44,178	-30,985
2006	-77,555	31,023	-46,532	-50,725
2007	-87,649	38,450	-49,199	-57,795
2002 Q1	-11,372	3,946	-7,426	-4,441
2002 Q2	-11,002	3,634	-7,368	-5,655
2002 Q3	-12,016	4,779	-7,237	-1,832
2002 Q4	-13,315	4,471	-8,844	-4,585
2003 Q1	-10,862	4,730	-6,132	-564
2003 Q2	-11,545	4,963	-6,582	-4,410
2003 Q3	-12,302	4,702	-7,600	-5,391
2003 Q4	-13,898	4,767	-9,131	-4,556
2004 Q1	-13,947	5,880	-8,067	-4,928
2004 Q2	-15,247	6,840	-8,407	-4,469
2004 Q3	-15,529	6,493	-9,036	-6,889
2004 Q4	-16,170	6,705	-9,465	-3,042
2005 Q1	-16,228	6,176	-10,052	-6,450
2005 Q2	-16,305	6,939	-9,366	-2,855
2005 Q3	-17,878	4,455	-13,423	-11,064
2005 Q4	-18,378	7,041	-11,337	-10,616
2006 Q1	-19,276	7,470	-11,806	-11,787
2006 Q2	-18,694	7,324	-11,370	-10,925
2006 Q3	-19,465	7,653	-11,812	-13,274
2006 Q4	-20,120	8,576	-11,544	-14,739
2007 Q1	-21,116	9,088	-12,028	-17,088
2007 Q2	-20,173	9,631	-10,542	-13,186
2007 Q3	-23,169	9,592	-13,577	-19,063
2007 Q4	-23,191	10,139	-13,052	-8,458

Source: *Monthly Digest of Statistics*, ONS

**Chart 3: UK Trade Balance (£bn)**



Source: Monthly Digest of Statistics, ONS

**Table 7: Inflation Rates - Annual and Quarterly % Changes<sup>1</sup>**

	RPI		RPIX		CPI		PPI			
	Y	Q	Y	Q	Y	Q	Output prices		Input prices	
							Y	Q	Y	Q
2000	3.0	..	2.1	..	0.8	..	1.5	..	7.4	..
2001	1.8	..	2.1	..	1.2	..	-0.3	..	-1.2	..
2002	1.7	..	2.2	..	1.3	..	0.1	..	-4.5	..
2003	2.9	..	2.8	..	1.4	..	1.5	..	1.4	..
2004	3.0	..	2.2	..	1.3	..	2.5	..	4.0	..
2005	2.8	..	2.3	..	2.1	..	2.8	..	11.7	..
2006	3.2	..	2.9	..	2.3	..	2.4	..	9.6	..
2007	4.3	..	3.2	..	2.3	..	3.0	..	3.3	..
2000 Q1	2.3	0.4	2.1	0.1	0.8	-0.4	1.4	0.3	6.6	2.1
2000 Q2	3.1	1.9	2.1	1.3	0.6	0.8	1.4	0.9	6.8	0.4
2000 Q3	3.2	0.2	2.1	0.1	0.8	0.0	1.7	0.2	8.3	3.8
2000 Q4	3.1	0.6	2.1	0.6	1.0	0.5	1.5	0.1	7.9	1.4
2001 Q1	2.6	-0.1	1.9	-0.1	0.9	-0.5	0.5	-0.7	3.8	-1.7
2001 Q2	1.9	1.2	2.3	1.7	1.5	1.5	0.0	0.4	3.8	0.4
2001 Q3	1.8	0.1	2.4	0.2	1.5	0.0	-0.5	-0.3	-3.5	-3.5
2001 Q4	1.0	-0.1	2.0	0.2	1.0	0.1	-1.1	-0.5	-8.6	-4.0
2002 Q1	1.2	0.1	2.4	0.3	1.5	0.0	-0.5	-0.1	-6.6	0.4
2002 Q2	1.2	1.2	1.9	1.2	0.9	0.8	-0.3	0.6	-6.6	0.4
2002 Q3	1.5	0.3	2.0	0.3	1.0	0.1	0.1	0.1	-3.9	-0.7
2002 Q4	2.5	0.9	2.6	0.8	1.5	0.5	0.8	0.2	-0.3	-0.4
2003 Q1	3.0	0.6	2.9	0.6	1.5	0.0	1.7	0.8	1.8	2.6
2003 Q2	3.0	1.2	2.9	1.2	1.3	0.6	1.3	0.2	-0.4	-1.8
2003 Q3	2.9	0.3	2.8	0.2	1.4	0.2	1.4	0.2	1.3	1.0
2003 Q4	2.6	0.6	2.6	0.6	1.3	0.5	1.6	0.4	3.1	1.4
2004 Q1	2.6	0.5	2.3	0.3	1.3	-0.1	1.5	0.7	-0.2	-0.7
2004 Q2	2.8	1.4	2.2	1.1	1.4	0.8	2.3	1.0	3.9	2.3
2004 Q3	3.1	0.6	2.1	0.2	1.3	0.0	2.9	0.8	5.6	2.5
2004 Q4	3.4	1.0	2.3	0.7	1.4	0.7	3.3	0.9	6.7	2.5
2005 Q1	3.2	0.3	2.2	0.2	1.7	0.2	2.7	0.1	10.5	2.8
2005 Q2	3.0	1.2	2.2	1.1	2.0	1.0	2.8	1.0	9.8	1.6
2005 Q3	2.8	0.4	2.4	0.3	2.4	0.5	3.1	1.0	12.5	5.1
2005 Q4	2.4	0.6	2.3	0.6	2.1	0.4	2.5	0.3	13.6	3.4
2006 Q1	2.4	0.3	2.2	0.2	1.9	0.0	2.8	0.4	14.5	3.7
2006 Q2	3.0	1.8	2.8	1.7	2.3	1.3	3.0	1.3	13.3	0.5
2006 Q3	3.5	0.9	3.2	0.7	2.4	0.7	2.5	0.5	7.9	0.2
2006 Q4	4.0	1.1	3.5	0.8	2.7	0.8	1.9	-0.4	3.6	-0.7
2007 Q1	4.5	0.8	3.7	0.4	2.9	0.1	2.4	0.9	-0.9	-0.8
2007 Q2	4.4	1.6	3.4	1.4	2.6	1.1	2.5	1.4	1.0	2.4
2007 Q3	3.9	0.4	2.7	0.0	1.8	-0.2	2.5	0.6	2.7	1.9
2007 Q4	4.2	1.3	3.1	1.2	2.1	1.1	4.6	1.6	10.4	6.7

Source: *Economic & Labour Market Review*, ONS

Data are not seasonally adjusted

<sup>1</sup> Y represents annual change for yearly data and quarter on same quarter in previous year for quarterly data. Q represents percentage change from previous quarter.

RPI - retail price index; RPIX - retail price index excl. mortgage interest payments; CPI - consumer price index; PPI - producer price index

**Table 8: Selected UK Financial Data**

	Money supply - notes & coins <sup>1</sup> (% ann. ch.)	M4 <sup>1,4</sup> ann. ch.)	(% ann. ch.)	Bank Repo Rate (%) <sup>1</sup>	Inter-bank 3 month offer rate (%) <sup>2</sup>	Ordinary Share Price Index <sup>3,5</sup>	Trade Balance <sup>2,6</sup> (£m)
<b>2004</b>							
January	7.6	8.7		3.75	4.10	2,216.85	-3,571
February	6.9	8.4		4.00	4.16	2,217.57	-2,346
March	6.9	7.9		4.00	4.33	2,223.00	-2,150
April	5.6	7.4		4.00	4.39	2,253.52	-2,790
May	5.4	8.2		4.25	4.59	2,210.47	-2,785
June	6.3	8.0		4.50	4.79	2,227.31	-2,832
July	5.9	9.0		4.50	4.89	2,174.71	-3,120
August	5.3	10.0		4.75	4.90	2,175.48	-3,063
September	5.9	9.0		4.75	4.86	2,265.36	-2,853
October	5.9	9.6		4.75	4.84	2,305.27	-3,348
November	5.3	9.1		4.75	4.80	2,359.54	-3,128
December	5.8	9.0		4.75	4.84	2,372.41	-2,989
<b>2005</b>							
January	5.8	9.4		4.75	4.81	2,422.06	-3,513
February	5.8	9.8		4.75	4.90	2,509.71	-3,147
March	5.1	10.5		4.75	4.93	2,491.40	-3,392
April	4.8	10.7		4.75	4.88	2,451.26	-3,650
May	4.2	11.2		4.75	4.81	2,456.72	-3,163
June	3.8	10.5		4.75	4.73	2,529.12	-2,553
July	4.6	11.1		4.75	4.56	2,615.17	-3,393
August	4.9	10.1		4.50	4.54	2,661.66	-5,999
September	3.8	11.3		4.50	4.55	2,705.65	-4,031
October	3.6	11.8		4.50	4.56	2,652.68	-3,350
November	3.8	12.4		4.50	4.58	2,744.60	-4,203
December	3.2	12.8		4.50	4.59	2,798.03	-3,784
<b>2006</b>							
January	4.1	12.1		4.50	4.54	2,894.30	-4,055
February	4.5	12.4		4.50	4.53	2,958.06	-4,096
March	5.1	12.4		4.50	4.56	3,029.00	-3,636
April	5.4	12.7		4.50	4.63	3,088.09	-3,792
May	5.4	11.3		4.50	4.68	2,983.54	-4,279
June	5.6	13.1		4.50	4.73	2,883.70	-3,318
July	5.3	12.7		4.50	4.74	2,961.23	-3,826
August	5.0	13.2		4.75	4.95	2,985.59	-4,198
September	5.1	13.9		4.75	5.05	3,010.91	-3,789
October	5.4	13.6		4.75	5.16	3,123.59	-3,516
November	5.3	12.7		5.00	5.22	3,168.89	-3,794
December	5.1	12.6		5.00	5.29	3,189.64	-4,251
<b>2007</b>							
January	4.3	12.8		5.25	5.55	3,228.90	-3,709
February	4.1	12.6		5.25	5.50	3,229.90	-4,044
March	4.1	12.7		5.25	5.58	3,230.90	-4,266
April	3.7	13.0		5.25	5.70	3,231.90	-3,282
May	4.6	14.0		5.50	5.78	3,232.90	-3,675
June	4.8	13.0		5.50	5.98	3,233.90	-3,799
July	4.3	13.2		5.75	6.02	3,234.90	-4,500
August	4.6	13.8		5.75	6.65	3,235.90	-4,111
September	5.4	13.0		5.75	6.28	3,236.90	-4,699
October	5.4	12.1		5.75	6.25	3,237.90	-4,356
November	5.4	11.9		5.75	6.58	3,238.90	-4,352
December	5.8	12.4		5.50	5.95	3,239.90	-4,094
<b>2008</b>							
January	6.3	13.2		5.50	5.58	3,240.90	-4,102
February	6.6	12.3		5.25	5.72	3,241.90	..
March	6.8	11.9		5.25	..	3,242.90	..

Source: <sup>1</sup> Bank of England; <sup>2</sup> Economic Trends, ONS; <sup>3</sup> London Stock Exchange

<sup>4</sup> Money supply (M4) is made up of notes and coins in circulation with the public together with all deposits with banks and building societies

**Table 9: Exchange Rate of Selected Major Currencies**

	US \$	EURO	JPY	Effective rates 2005=100
1998	1.6574	1.4768	216.7492	99.98
1999	1.6180	1.5192	183.9356	99.36
2000	1.5151	1.6422	163.2665	101.14
2001	1.4400	1.6087	174.8440	99.47
2002	1.5035	1.5909	187.8696	100.55
2003	1.6353	1.4456	189.3222	96.88
2004	1.8323	1.4739	198.1007	101.59
2005	1.8189	1.4629	200.1584	100.46
2006	1.8430	1.4670	214.3255	101.16
2007	2.0022	1.4619	235.7087	103.53
2001 Q1	1.4586	1.5814	172.3701	98.54
2001 Q2	1.4203	1.6280	174.0834	99.66
2001 Q3	1.4371	1.6152	174.7080	99.68
2001 Q4	1.4430	1.6111	178.1787	99.99
2002 Q1	1.4262	1.6263	188.8342	100.58
2002 Q2	1.4618	1.5923	185.3810	99.63
2002 Q3	1.5496	1.5747	184.8054	100.79
2002 Q4	1.5713	1.5716	192.4193	101.26
2003 Q1	1.6031	1.4937	190.6703	98.46
2003 Q2	1.6201	1.4256	191.9755	95.87
2003 Q3	1.6114	1.4300	189.1885	95.82
2003 Q4	1.7059	1.4334	185.6021	97.39
2004 Q1	1.8383	1.4708	197.0714	101.64
2004 Q2	1.8062	1.4992	198.2300	102.41
2004 Q3	1.8188	1.4877	199.9364	102.11
2004 Q4	1.8647	1.4388	197.1425	100.27
2005 Q1	1.8907	1.4424	197.5748	100.70
2005 Q2	1.8553	1.4744	199.5592	101.63
2005 Q3	1.7850	1.4635	198.4809	99.81
2005 Q4	1.7479	1.4706	204.9898	99.63
2006 Q1	1.7526	1.4570	204.8289	98.84
2006 Q2	1.8303	1.4540	209.0878	100.29
2006 Q3	1.8749	1.4713	217.9074	102.22
2006 Q4	1.9147	1.4854	225.4054	103.55
2007 Q1	1.9545	1.4916	233.3291	104.58
2007 Q2	1.9869	1.4732	240.1081	104.07
2007 Q3	2.0212	1.4705	238.1900	104.16
2007 Q4	2.0456	1.4129	231.4138	101.32
2008 Q1	1.9780	1.3212	208.4245	95.54

Annual and quarterly averages; 3.14625 DM:£ and 10.55207 FRF:£ in 2001

Source: Bank of England

**Table 10: Volume of Retail Sales (2000=100)**

	All retailers		Predominantly food stores		Predominantly non-food stores	
	Index	% change <sup>1</sup>	Index	% change <sup>1</sup>	Index	% change <sup>1</sup>
2001	106.1	6.1	104.2	4.2	108.3	8.3
2002	112.5	6.0	108.7	4.3	116.4	7.5
2003	116.4	3.5	112.0	3.0	121.3	4.2
2004	123.6	6.2	116.6	4.1	130.1	7.3
2005	125.8	1.8	119.8	2.7	131.6	1.2
2006	129.8	3.2	122.9	2.6	136.2	3.5
2007	135.4	4.3	124.5	1.3	144.0	5.7
2004 Q1	121.5	6.3	114.9	4.3	128.0	7.5
2004 Q2	123.4	6.7	116.3	4.0	130.0	8.2
2004 Q3	124.7	6.7	117.3	4.1	131.4	8.1
2004 Q4	124.7	4.9	117.9	3.9	130.9	5.2
2005 Q1	124.9	2.8	119.1	3.7	130.2	1.7
2005 Q2	125.2	1.5	119.2	2.5	130.8	0.6
2005 Q3	125.7	0.8	119.6	2.0	131.9	0.4
2005 Q4	127.2	2.0	121.2	2.8	133.5	2.0
2006 Q1	126.9	1.6	121.5	2.0	132.6	1.8
2006 Q2	129.5	3.4	122.5	2.8	136.2	4.1
2006 Q3	130.3	3.7	123.4	3.2	136.4	3.4
2006 Q4	132.4	4.1	124.0	2.3	139.6	4.6
2007 Q1	132.9	4.7	124.0	2.1	140.2	5.7
2007 Q2	134.7	4.0	123.9	1.1	143.3	5.2
2007 Q3	136.7	4.9	124.8	1.1	146.0	7.0
2007 Q4	137.5	3.9	125.3	1.0	146.4	4.9
Jan-06	126.7	1.0	120.9	0.6	132.8	1.9
Feb-06	126.6	1.4	121.4	2.2	132.3	1.8
Mar-06	127.3	2.2	121.9	2.9	132.7	1.8
Apr-06	128.5	2.7	121.9	2.4	135.1	3.7
May-06	129.5	4.0	121.5	2.1	137.1	5.5
Jun-06	130.2	3.4	123.8	3.6	136.4	3.3
Jul-06	130.4	4.1	124.7	4.2	136.1	3.9
Aug-06	130.7	4.2	122.2	2.8	137.8	4.6
Sep-06	129.8	2.8	123.4	2.8	135.4	2.0
Oct-06	131.6	3.9	123.7	2.4	138.6	4.4
Nov-06	132.0	3.2	123.5	1.6	139.3	3.6
Dec-06	133.4	4.9	124.7	3.0	140.7	5.5
Jan-07	131.2	3.6	124.1	2.6	137.1	3.2
Feb-07	133.0	5.1	123.7	1.9	140.6	6.3
Mar-07	134.1	5.3	124.2	1.9	142.5	7.4
Apr-07	134.3	4.5	124.3	2.0	142.4	5.4
May-07	134.5	3.9	124.2	2.2	142.7	4.1
Jun-07	135.2	3.8	123.5	-0.2	144.6	6.0
Jul-07	135.9	4.2	123.4	-1.0	145.6	7.0
Aug-07	136.7	4.6	125.3	2.5	145.6	5.7
Sep-07	137.4	5.9	125.5	1.7	146.6	8.3
Oct-07	137.2	4.3	125.1	1.1	146.7	5.8
Nov-07	137.9	4.5	125.4	1.5	146.7	5.3
Dec-07	137.5	3.1	125.2	0.4	145.9	3.7
Jan-08	139.0	5.9	126.5	1.9	147.2	7.4
Feb-08	140.3	5.5	128.5	3.9	147.9	5.2

Source: Monthly Digest of Statistics, ONS

Seasonally adjusted

<sup>1</sup> % change on year for annual data, on same quarter in previous year for quarterly data, and on same month in previous year for monthly data

**Table 11: Household Consumption Expenditure<sup>1</sup> (£m)**

	Durable	Non-Durable	
	Goods	Goods	Services
1999	68,507	149,062	277,816
2000	72,176	153,973	296,105
2001	77,604	157,005	313,055
2002	80,774	161,537	330,068
2003	85,061	168,169	344,663
2004	88,653	176,668	363,338
2005	88,472	182,952	384,924
2006	90,701	192,051	402,584
2007	93,996	202,968	428,515
2001 Q1	19,088	38,942	76,545
2001 Q2	18,893	39,123	77,814
2001 Q3	19,633	39,237	79,087
2001 Q4	19,990	39,703	79,609
2002 Q1	19,818	39,689	81,338
2002 Q2	20,286	40,034	82,093
2002 Q3	20,203	40,594	82,861
2002 Q4	20,467	41,220	83,776
2003 Q1	20,662	41,479	84,471
2003 Q2	21,430	42,127	85,391
2003 Q3	21,530	42,167	86,886
2003 Q4	21,439	42,396	87,915
2004 Q1	22,076	43,379	89,100
2004 Q2	22,077	43,956	90,545
2004 Q3	22,383	44,202	91,264
2004 Q4	22,117	45,131	92,429
2005 Q1	22,028	45,061	94,409
2005 Q2	21,946	45,549	95,491
2005 Q3	22,183	45,667	96,877
2005 Q4	22,315	46,675	98,147
2006 Q1	22,397	46,388	98,824
2006 Q2	22,693	47,762	99,827
2006 Q3	22,647	48,689	101,207
2006 Q4	22,964	49,212	102,726
2007 Q1	23,246	49,663	105,027
2007 Q2	23,560	50,112	106,578
2007 Q3	23,662	51,216	107,647
2007 Q4	23,528	51,977	109,263

Source: ONS, Consumer Trends

<sup>1</sup> Data are seasonally adjusted

**Table 12: Household Disposable Income & Gross Savings<sup>1</sup>**

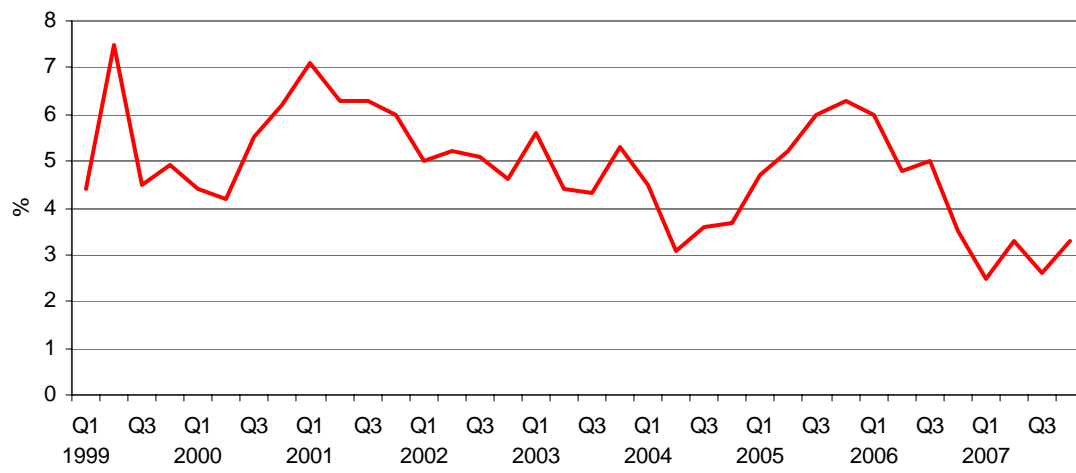
	Gross Disposable Income			Gross Savings			Savings Ratio
	£ million	% Y	% Q	£ million	% Y	% Q	%
1999	608,988	4.5	..	33,136	-20.8	..	5.3
2000	643,415	5.7	..	33,584	1.4	..	5.1
2001	686,312	6.7	..	45,137	34.4	..	6.4
2002	709,048	3.3	..	36,301	-19.6	..	5.0
2003	740,389	4.4	..	37,421	3.1	..	4.9
2004	765,683	3.4	..	29,307	-21.7	..	3.7
2005	807,987	5.5	..	46,743	59.5	..	5.6
2006	834,518	3.3	..	41,553	-11.1	..	4.8
2001 Q1	169,413	7.2	2.8	12,340	71.7	17.5	7.1
2001 Q2	170,291	7.5	0.5	10,924	62.1	-11.5	6.3
2001 Q3	173,056	6.8	1.6	11,146	21.7	2.0	6.3
2001 Q4	173,552	5.3	0.3	10,727	2.2	-3.8	6.0
2002 Q1	175,164	3.4	0.9	9,047	-26.7	-15.7	5.0
2002 Q2	177,166	4.0	1.1	9,379	-14.1	3.7	5.2
2002 Q3	177,826	2.8	0.4	9,381	-15.8	0.0	5.1
2002 Q4	178,892	3.1	0.6	8,494	-20.8	-9.5	4.6
2003 Q1	183,076	4.5	2.3	10,567	16.8	24.4	5.6
2003 Q2	184,564	4.2	0.8	8,313	-11.4	-21.3	4.4
2003 Q3	184,502	3.8	0.0	8,249	-12.1	-0.8	4.3
2003 Q4	188,247	5.2	2.0	10,292	21.2	24.8	5.3
2004 Q1	189,655	3.6	0.7	8,770	-17.0	-14.8	4.5
2004 Q2	190,116	3.0	0.2	6,100	-26.6	-30.4	3.1
2004 Q3	192,615	4.4	1.3	7,097	-14.0	16.3	3.6
2004 Q4	193,297	2.7	0.4	7,340	-28.7	3.4	3.7
2005 Q1	197,642	4.2	2.2	9,708	10.7	32.3	4.7
2005 Q2	199,957	5.2	1.2	10,729	75.9	10.5	5.2
2005 Q3	203,737	5.8	1.9	12,744	79.6	18.8	6.0
2005 Q4	206,651	6.9	1.4	13,562	84.8	6.4	6.3
2006 Q1	205,683	4.1	-0.5	12,867	32.5	-5.1	6.0
2006 Q2	207,949	4.0	1.1	10,379	-3.3	-19.3	4.8
2006 Q3	210,577	3.4	1.3	10,809	-15.2	4.1	4.9
2006 Q4	210,309	1.8	-0.1	7,498	-44.7	-30.6	3.4
2007 Q1	211,527	2.8	0.6	5,174	-59.8	-31.0	2.4
2007 Q2	216,545	4.1	2.4	9,110	-12.2	76.1	4.0
2007 Q3	218,292	3.7	0.8	7,742	-28.4	-15.0	3.4

Source: Household Sector: Use of Disposable Income Account, ONS

Data are seasonally adjusted

<sup>1</sup> Y represents annual change for yearly data and quarter on same quarter in previous year for quarterly data. Q represents percentage change from previous quarter.

**Chart 4: Household Savings Ratio (%)**



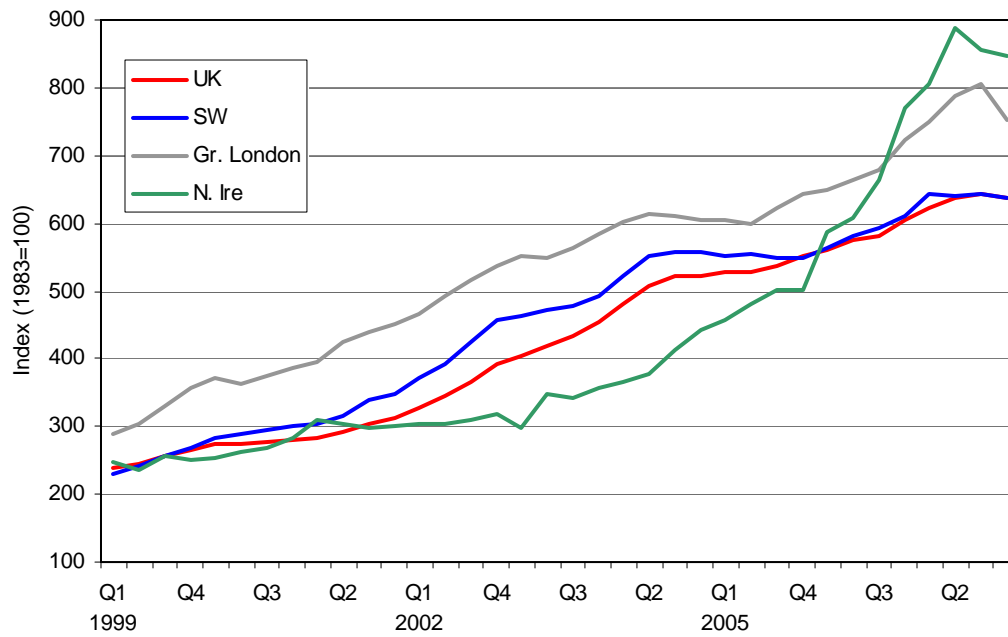
Source: Monthly Digest of Statistics, ONS

**Table 13: Regional Standardised Indices of House Prices (1983=100)**

	SW	% annual change	UK	% annual change	NE	NW	YH	EM	WM	E	L	SE	WAL	SCO	NI
2000	291.0	17.0	275.1	9.8	221.9	242.6	243.9	265.0	282.2	279.7	373.6	318.3	245.0	214.2	264.4
2001	327.8	12.6	298.6	8.5	234.0	255.7	257.5	287.3	301.5	322.6	428.3	354.7	263.8	220.0	296.8
2002	403.4	23.1	350.6	17.4	271.4	292.8	297.7	361.7	363.7	386.0	499.4	413.7	299.8	238.5	307.4
2003	477.7	18.4	429.1	22.4	370.6	366.3	395.6	457.5	460.7	465.0	563.3	483.8	397.2	274.5	340.3
2004	545.4	14.2	507.6	18.3	490.3	472.8	495.0	541.4	540.5	522.3	608.5	528.8	516.3	330.6	397.9
2005	552.6	1.3	536.6	5.7	533.3	523.7	549.3	564.9	565.4	536.0	621.4	537.0	553.7	375.7	486.0
2006	587.5	6.3	581.3	8.3	567.3	565.1	602.4	599.4	602.8	581.1	680.9	571.2	589.7	421.7	644.4
2007	641.9	9.3	635.9	9.4	601.8	596.8	640.5	632.4	640.4	637.3	777.6	636.9	640.7	488.2	844.5
2003 Q1	464.3	24.8	403.8	23.4	331.3	336.0	359.4	436.3	425.4	450.5	551.3	478.2	358.7	252.7	298.7
Q2	471.5	20.1	419.0	21.9	358.3	354.2	384.9	445.7	450.3	456.0	550.0	475.2	378.3	269.1	349.2
Q3	477.4	12.1	434.5	18.7	375.1	374.4	407.6	461.6	470.6	464.6	564.4	486.2	399.3	282.4	342.1
Q4	492.4	7.7	455.3	16.1	413.1	396.5	427.6	481.8	488.0	483.0	584.4	494.2	446.6	291.5	357.0
2004 Q1	520.8	12.2	480.3	18.9	451.6	439.4	461.4	505.8	510.5	496.1	601.3	514.0	484.1	296.2	365.5
Q2	551.1	16.9	508.4	21.3	486.5	472.7	492.8	552.3	541.5	518.8	614.9	533.9	512.2	330.1	376.2
Q3	559.0	17.1	522.0	20.1	514.4	487.5	513.9	559.9	559.0	542.5	610.0	538.0	548.6	344.8	412.3
Q4	558.8	13.5	523.5	15.0	515.9	504.6	523.4	558.6	558.8	541.9	605.5	530.4	525.2	340.9	441.5
2005 Q1	550.5	5.7	526.9	9.7	517.5	505.9	532.3	566.7	560.7	534.5	606.2	536.0	534.3	367.8	456.9
Q2	554.9	0.7	526.8	3.6	511.7	511.1	536.6	562.1	561.2	527.6	599.8	528.8	556.9	367.7	481.4
Q3	549.6	-1.7	537.7	3.0	541.7	531.2	555.2	560.0	564.4	536.6	623.2	532.5	567.6	369.7	501.7
Q4	549.5	-1.7	550.3	5.1	559.8	539.5	568.7	570.7	571.7	536.9	643.5	544.8	556.2	389.2	501.3
2006 Q1	562.4	2.2	560.4	6.4	555.7	553.0	583.4	588.1	586.2	557.8	649.5	546.7	578.4	392.4	586.4
Q2	582.2	4.9	574.9	9.1	562.0	557.2	602.7	596.0	601.1	577.7	664.7	562.5	578.7	418.7	606.6
Q3	594.3	8.1	581.7	8.2	571.6	567.2	599.3	593.8	605.6	582.8	679.0	574.4	585.1	426.2	664.6
Q4	609.7	11.0	606.0	10.1	577.0	583.8	628.6	621.2	613.0	610.5	722.1	595.2	620.0	443.3	769.5
2007 Q1	642.9	14.3	623.5	11.3	589.6	591.3	631.2	622.0	642.4	623.4	749.8	616.5	648.5	478.6	806.0
Q2	639.3	9.8	637.8	10.9	614.9	596.2	645.9	635.1	633.6	641.4	788.0	641.8	631.6	484.7	887.4
Q3	642.0	8.0	643.0	10.5	601.6	598.4	645.9	640.1	635.9	643.4	804.6	652.1	639.8	488.9	855.8
Q4	637.8	4.6	636.9	5.1	601.2	602.2	635.5	625.3	651.1	635.2	753.2	636.6	643.4	501.9	846.2
2008 Q1	621.5	-3.3	630.8	1.2	608.5	599.3	632.1	644.3	618.6	644.3	765.4	636.9	613.3	503.1	833.2

Source: Halifax House Price Index

**Chart 5: Halifax House Price Index (1983=100)**



Source: Halifax House Price Index

**Table 14: Consensus Forecasts<sup>1</sup>**

	2008	2009
GDP Growth (%)	1.7	1.6
Inflation rate (Q4: %)		
- Consumer Price Index (CPI)	2.5	2.1
- Headline inflation (all items RPI)	2.9	2.5
Unemployment (Q4, million)	0.89	0.97
Current Account (£ bn)	-56.7	-51.8
PSNB <sup>2</sup> (£ bn)	42.2	43.4

Source: HM Treasury

<sup>1</sup> Average of forecasts received between 2nd and 9th February 2008.

<sup>2</sup> PSNB: Public Sector Net Borrowing

## Labour Market

**Table 15: UK Workforce Jobs by Industry ('000s)**

	Total		Agriculture & fishing		Mining, electricity, gas & water		Manufacturing		Construction		Distribution, hotels & restaurants		Transport & communication		Banking, finance & insurance		Public admin, education & health		Other services	
	No.	%	No.	%	No.	%	No.	%	No.	%	No.	%	No.	%	No.	%	No.	%	No.	%
2001	29,923	1.1	473	-8.3	219	3.8	4,079	-4.1	1,917	0.9	6,849	1.6	1,840	4.6	5,756	4.2	6,994	1.2	1,795	0.3
2002	30,078	0.5	436	-7.8	211	-3.7	3,885	-4.8	1,948	1.6	6,953	1.5	1,838	-0.1	5,769	0.2	7,159	2.4	1,880	4.7
2003	30,375	1.0	421	-3.4	196	-7.1	3,691	-5.0	1,997	2.5	6,995	0.6	1,854	0.9	5,905	2.4	7,425	3.7	1,890	0.5
2004	30,683	1.0	423	0.5	177	-9.7	3,546	-3.9	2,069	3.6	7,081	1.2	1,837	-0.9	6,013	1.8	7,639	2.9	1,898	0.4
2005	31,040	1.2	448	5.9	169	-4.5	3,367	-5.0	2,119	2.4	7,099	0.3	1,849	0.7	6,239	3.8	7,812	2.3	1,937	2.1
2006	31,294	0.8	438	-2.2	172	1.8	3,261	-3.1	2,165	2.2	7,021	-1.1	1,864	0.8	6,415	2.8	7,962	1.9	1,995	3.0
2007	29,804	0.4	492	-1.8	215	0.9	4,157	-1.2	1,878	0.1	6,825	0.7	1,810	1.7	5,689	1.7	6,951	-0.2	1,787	1.2
2004 Q1	30,649	4.0	416	-16.6	183	-11.2	3,567	-17.7	2060	11.7	7,096	5.1	1,840	5.3	5,964	8.8	7,602	11.3	1,919	8.2
2004 Q2	30,683	3.9	423	-18.0	177	-14.9	3,546	-17.7	2069	12.0	7,081	4.8	1,837	4.9	6,013	9.9	7,639	11.6	1,898	4.5
2004 Q3	30,685	3.7	433	-16.1	177	-16.1	3,487	-18.0	2056	8.2	7,074	5.0	1,829	4.0	6,056	9.7	7,691	11.3	1,882	5.2
2004 Q4	30,852	3.9	447	-10.8	170	-20.2	3,457	-17.9	2100	11.9	7,140	5.4	1,828	2.7	6,070	8.5	7,729	10.9	1,910	8.2
2005 Q1	31,018	1.2	458	10.1	168	-8.2	3,420	-4.1	2133	3.5	7,119	0.3	1,838	-0.1	6,174	3.5	7,785	2.4	1,922	0.2
2005 Q2	31,040	1.2	448	5.9	169	-4.5	3,367	-5.0	2119	2.4	7,099	0.3	1,849	0.7	6,239	3.8	7,812	2.3	1,937	2.1
2005 Q3	31,138	1.5	445	2.8	169	-4.5	3,329	-4.5	2150	4.6	7,101	0.4	1,859	1.6	6,282	3.7	7,864	2.2	1,939	3.0
2005 Q4	31,253	1.3	453	1.3	169	-0.6	3,319	-4.0	2149	2.3	7,078	-0.9	1,866	2.1	6,364	4.8	7,892	2.1	1,962	2.7
2006 Q1	31,276	0.8	449	-2.0	166	-1.2	3,286	-3.9	2,149	0.8	7,042	-1.1	1,874	2.0	6,391	3.5	7,942	2.0	1,977	2.9
2006 Q2	31,294	0.8	438	-2.2	172	1.8	3,261	-3.1	2,165	2.2	7,021	-1.1	1,864	0.8	6,415	2.8	7,962	1.9	1,995	3.0
2006 Q3	31,312	0.6	445	0.0	174	3.0	3,241	-2.6	2,189	1.8	6,994	-1.5	1,850	-0.5	6,449	2.7	7,958	1.2	2,012	3.8
2006 Q4	31,412	0.5	454	0.2	177	4.7	3,224	-2.9	2,215	3.1	7,014	-0.9	1,853	-0.7	6,503	2.2	7,967	1.0	2,004	2.1
2007 Q1	31,431	0.5	427	-4.9	180	8.4	3,213	-2.2	2,215	3.1	7,033	-0.1	1,831	-2.3	6,544	2.4	7,987	0.6	2,001	1.2
2007 Q2	31,536	0.8	447	2.1	181	5.2	3,199	-1.9	2,230	3.0	7,070	0.7	1,835	-1.6	6,593	2.8	7,980	0.2	2,001	0.3
2007 Q3	31,607	0.9	447	0.4	182	4.6	3,201	-1.2	2,227	1.7	7,074	1.1	1,836	-0.8	6,656	3.2	7,980	0.3	2,005	-0.3
2007 Q4	31,620	0.7	451	-0.7	183	3.4	3,172	-1.6	2,208	-0.3	7,117	1.5	1,854	0.1	6,651	2.3	7,991	0.3	1,992	-0.6

Source: Labour Market Statistics, ONS

% represents annual change for yearly data and quarter on same quarter in previous year for quarterly data.

Data are seasonally adjusted

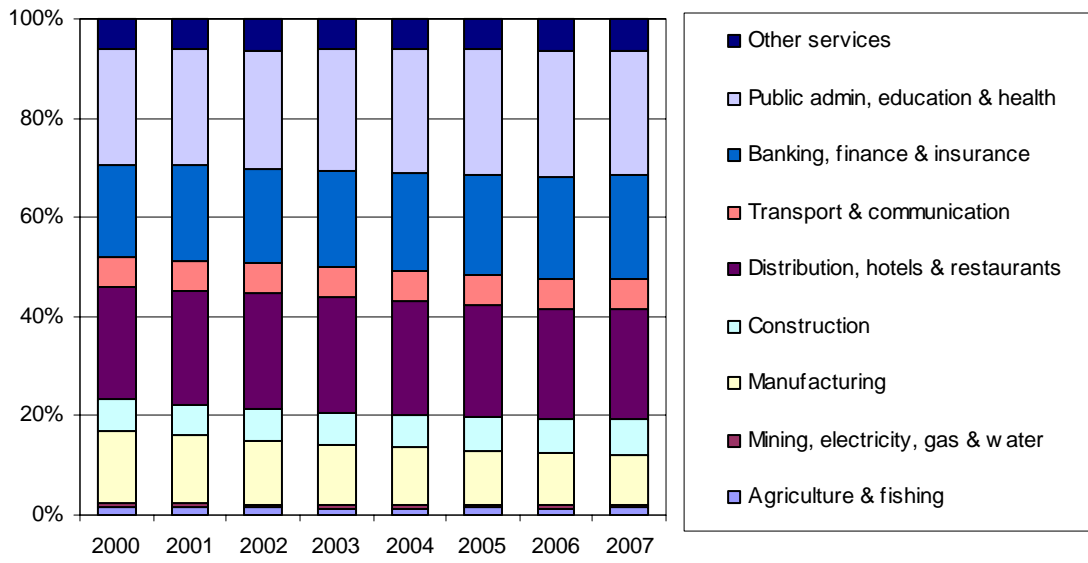
**Table 16: Industry Share of UK workforce Jobs (%)**

	Total (000s)	Agriculture & fishing	Mining, electricity, gas & water	Manufacturing	Construction	Distribution, hotels & restaurants	Transport & communication	Banking, finance & insurance	Public admin, education & health	Other services
2002	30,078	1.45	0.70	12.92	6.48	23.12	6.11	19.18	23.80	6.25
2003	30,375	1.39	0.65	12.15	6.57	23.03	6.10	19.44	24.44	6.22
2004	30,683	1.38	0.58	11.56	6.74	23.08	5.99	19.60	24.90	6.19
2005	31,040	1.44	0.54	10.85	6.83	22.87	5.96	20.10	25.17	6.24
2006	31,294	1.40	0.55	10.42	6.92	22.44	5.96	20.50	25.44	6.38
2007	31,536	1.42	0.57	10.14	7.07	22.42	5.82	20.91	25.30	6.35
2003 Q1	29,461	1.69	0.70	14.70	6.26	22.91	5.93	18.61	23.18	6.02
2003 Q2	29,522	1.75	0.70	14.60	6.26	22.88	5.93	18.54	23.19	6.15
2003 Q3	29,604	1.74	0.71	14.37	6.42	22.77	5.94	18.65	23.35	6.04
2003 Q4	29,685	1.69	0.72	14.18	6.32	22.83	6.00	18.84	23.47	5.95
2004 Q1	30,649	1.36	0.60	11.64	6.72	23.15	6.00	19.46	24.80	6.26
2004 Q2	30,683	1.38	0.58	11.56	6.74	23.08	5.99	19.60	24.90	6.19
2004 Q3	30,685	1.41	0.58	11.36	6.70	23.05	5.96	19.74	25.06	6.13
2004 Q4	30,852	1.45	0.55	11.21	6.81	23.14	5.93	19.67	25.05	6.19
2005 Q1	31,018	1.48	0.54	11.03	6.88	22.95	5.93	19.90	25.10	6.20
2005 Q2	31,040	1.44	0.54	10.85	6.83	22.87	5.96	20.10	25.17	6.24
2005 Q3	31,138	1.43	0.54	10.69	6.90	22.80	5.97	20.17	25.26	6.23
2005 Q4	31,253	1.45	0.54	10.62	6.88	22.65	5.97	20.36	25.25	6.28
2006 Q1	31,276	1.44	0.53	10.51	6.87	22.52	5.99	20.43	25.39	6.32
2006 Q2	31,294	1.40	0.55	10.42	6.92	22.44	5.96	20.50	25.44	6.38
2006 Q3	31,312	1.42	0.56	10.35	6.99	22.34	5.91	20.60	25.42	6.43
2006 Q4	31,412	1.45	0.56	10.26	7.05	22.33	5.90	20.70	25.36	6.38
2007 Q1	31,431	1.36	0.57	10.22	7.05	22.38	5.83	20.82	25.41	6.37
2007 Q2	31,536	1.42	0.57	10.14	7.07	22.42	5.82	20.91	25.30	6.35
2007 Q3	31,607	1.41	0.58	10.13	7.05	22.38	5.81	21.06	25.25	6.34
2007 Q4	31,620	1.43	0.58	10.03	6.98	22.51	5.86	21.03	25.27	6.30

Source: Labour Market Statistics, ONS

Data are seasonally adjusted

**Chart 6: Industry Share of UK Workforce Jobs (%)**



Source: Labour Market Statistics, ONS

**Table 17: Employment Rate (%)**

	UK	NE	NW	YH	EM	WM	E	L	SE	SW	ENG	WAL	SCO	NI
2001 Q1	74.6	68.1	72.5	73.5	75.7	73.9	79.8	71.4	80.0	<b>78.7</b>	75.2	69.1	73.8	66.5
2001 Q2	74.5	68.4	73.0	73.1	75.5	73.7	79.2	71.6	80.1	<b>79.0</b>	75.2	68.1	73.5	67.4
2001 Q3	74.4	68.3	71.7	73.4	76.1	73.9	78.8	71.3	80.1	<b>78.8</b>	75.0	68.2	73.1	68.2
2001 Q4	74.4	68.3	72.0	73.3	76.2	74.3	79.2	70.9	80.0	<b>79.0</b>	75.1	68.3	73.0	66.9
2002 Q1	74.3	68.7	72.1	73.2	76.0	74.2	79.3	70.7	80.1	<b>78.4</b>	75.0	68.2	72.9	66.7
2002 Q2	74.5	68.6	72.2	73.1	76.6	74.4	79.1	71.0	79.9	<b>79.2</b>	75.2	69.3	73.4	67.7
2002 Q3	74.4	68.7	72.0	73.2	76.9	74.0	78.9	70.5	79.4	<b>79.1</b>	75.0	70.2	73.7	67.4
2002 Q4	74.7	67.5	73.5	73.5	76.3	74.5	78.3	70.9	79.5	<b>79.0</b>	75.1	71.7	74.4	68.6
2003 Q1	74.6	67.8	73.4	73.8	76.3	74.0	77.8	70.0	79.5	<b>78.5</b>	74.9	71.9	74.4	70.3
2003 Q2	74.8	68.3	73.6	74.2	76.2	73.8	78.6	70.1	79.2	<b>78.9</b>	75.0	73.0	74.8	69.1
2003 Q3	74.6	68.5	73.5	74.3	75.6	73.2	78.3	70.5	79.1	<b>78.7</b>	74.9	72.9	74.2	68.1
2003 Q4	74.6	69.5	73.4	74.1	76.1	73.4	79.7	69.9	78.9	<b>79.2</b>	75.1	72.0	73.9	66.8
2004 Q1	74.8	69.9	73.9	74.1	76.4	73.8	79.6	70.3	78.6	<b>79.3</b>	75.2	72.6	74.4	67.1
2004 Q2	74.7	69.9	73.8	74.1	76.2	73.9	79.0	70.1	78.7	<b>78.1</b>	75.0	72.6	74.7	66.9
2004 Q3	74.7	70.1	73.5	74.3	75.6	75.1	78.9	69.5	79.0	<b>78.7</b>	75.1	71.3	75.0	67.0
2004 Q4	74.9	69.9	74.1	74.4	76.1	74.9	78.8	69.4	79.1	<b>78.7</b>	75.2	72.2	75.1	69.2
2005 Q1	74.9	70.3	73.3	74.4	76.3	74.7	78.8	70.0	78.9	<b>78.8</b>	75.2	71.7	75.3	68.8
2005 Q2	74.7	70.2	73.3	74.2	76.5	74.4	78.7	69.4	79.0	<b>78.8</b>	75.0	71.4	75.0	68.5
2005 Q3	74.8	69.7	73.5	74.7	77.2	74.1	78.5	69.7	78.8	<b>78.3</b>	75.1	72.3	75.2	69.8
2005 Q4	74.5	70.1	72.9	74.4	77.1	73.4	77.5	69.5	78.8	<b>77.8</b>	74.7	71.8	75.4	68.7
2006 Q1	74.6	70.9	73.4	74.2	77.0	73.8	77.4	70.0	78.8	<b>78.1</b>	74.9	71.5	75.3	69.5
2006 Q2	74.6	71.7	73.3	74.1	76.9	73.8	76.9	69.6	79.0	<b>78.4</b>	74.9	71.5	74.8	70.1
2006 Q3	74.5	70.9	73.5	73.5	77.1	73.9	77.0	69.7	78.9	<b>77.8</b>	74.8	72.1	75.2	69.0
2006 Q4	74.5	71.2	73.0	73.9	76.5	73.2	77.1	69.8	78.7	<b>78.4</b>	74.7	71.8	76.1	69.5
2007 Q1	74.3	70.9	72.5	72.7	76.0	72.7	77.4	70.1	78.2	<b>78.0</b>	74.3	71.7	76.6	70.5
2007 Q2	74.4	71.2	72.6	73.1	75.9	72.6	77.2	69.9	78.5	<b>78.0</b>	74.4	72.2	77.1	70.6
2007 Q3	74.4	72.0	72.2	73.2	75.7	72.9	77.0	70.6	78.7	<b>78.5</b>	74.6	71.2	76.5	69.9
2007 Q4	74.7	71.9	72.9	73.6	75.7	73.3	78.1	70.2	78.9	<b>79.3</b>	74.9	71.5	76.5	69.8

Source: Labour Force Statistics, ONS

Data are seasonally adjusted

**Table 18: Unemployment Rate (%)**

	UK	NE	NW	YH	EM	WM	E	L	SE	SW	ENG	WAL	SCO	NI
2001 Q1	5.1	7.6	5.2	5.4	4.7	5.6	3.5	6.5	3.4	<b>3.9</b>	4.9	6.0	5.9	5.1
2001 Q2	5.0	7.4	5.3	5.5	5.0	5.5	3.6	6.2	3.2	<b>3.6</b>	4.8	6.1	6.3	5.0
2001 Q3	5.1	7.1	5.1	5.3	4.6	5.4	4.0	6.6	3.4	<b>3.6</b>	4.9	5.5	6.6	5.1
2001 Q4	5.2	7.2	5.4	5.1	4.6	5.5	3.9	7.3	3.4	<b>3.6</b>	5.0	5.8	6.7	5.2
2002 Q1	5.2	7.4	5.4	5.1	4.7	5.6	3.7	6.9	3.6	<b>3.5</b>	5.0	5.7	6.6	5.2
2002 Q2	5.2	6.5	5.5	5.3	4.6	5.7	3.7	6.8	3.8	<b>3.7</b>	5.0	5.7	6.3	5.2
2002 Q3	5.3	6.2	5.5	5.6	4.7	5.9	3.9	7.0	4.0	<b>4.0</b>	5.2	5.2	6.4	5.3
2002 Q4	5.1	7.3	4.9	5.0	4.8	5.7	4.0	6.6	4.0	<b>4.0</b>	5.0	5.1	6.1	5.1
2003 Q1	5.1	6.7	4.9	5.3	4.0	6.0	4.6	7.0	3.9	<b>3.8</b>	5.1	4.9	5.9	5.1
2003 Q2	4.9	6.1	5.0	5.1	4.3	5.6	3.9	7.2	3.9	<b>3.4</b>	4.9	4.5	5.3	4.9
2003 Q3	5.1	6.6	5.0	4.9	4.6	5.9	4.0	7.2	3.9	<b>3.3</b>	5.0	4.7	5.9	5.1
2003 Q4	4.9	6.3	4.7	4.9	4.5	5.7	3.4	6.9	3.8	<b>3.0</b>	4.8	4.8	5.8	4.9
2004 Q1	4.8	5.6	4.5	4.8	4.7	5.6	3.4	7.0	3.8	<b>3.0</b>	4.7	4.6	5.8	4.8
2004 Q2	4.8	5.5	4.4	4.6	4.2	5.5	3.8	7.0	3.7	<b>3.7</b>	4.7	4.2	6.0	4.8
2004 Q3	4.7	5.9	4.5	4.6	4.1	5.0	3.6	7.2	3.6	<b>3.3</b>	4.6	4.9	5.3	4.7
2004 Q4	4.7	6.4	4.6	4.6	4.2	4.7	3.8	7.1	3.5	<b>3.3</b>	4.6	4.2	5.7	4.7
2005 Q1	4.7	5.8	4.8	4.4	4.3	4.7	3.8	6.7	3.7	<b>3.6</b>	4.6	4.6	5.5	4.7
2005 Q2	4.8	6.8	4.4	4.8	4.2	4.7	3.9	7.1	3.8	<b>3.2</b>	4.7	4.6	5.4	4.8
2005 Q3	4.8	6.6	4.5	4.6	4.4	4.7	4.2	6.6	4.0	<b>3.7</b>	4.7	4.6	5.5	4.8
2005 Q4	5.1	6.5	4.9	5.5	4.6	5.3	4.5	7.3	4.2	<b>4.0</b>	5.2	4.9	5.2	5.1
2006 Q1	5.2	6.6	4.9	5.4	5.0	5.2	4.8	7.6	4.5	<b>3.6</b>	5.3	4.8	5.3	5.2
2006 Q2	5.5	6.1	5.3	5.8	5.4	5.7	5.0	7.8	4.7	<b>3.7</b>	5.5	5.7	5.4	5.5
2006 Q3	5.6	6.9	5.6	6.1	5.3	6.1	5.0	7.9	4.5	<b>3.9</b>	5.7	5.4	5.0	5.6
2006 Q4	5.5	6.5	5.3	6.0	5.8	6.5	4.5	7.8	4.3	<b>3.8</b>	5.6	5.2	5.3	5.5
2007 Q1	5.5	6.8	5.8	6.3	5.5	6.5	4.7	7.2	4.6	<b>4.0</b>	5.6	5.5	5.0	5.5
2007 Q2	5.4	6.5	5.8	5.7	5.0	6.8	4.6	7.4	4.2	<b>4.0</b>	5.5	5.6	4.5	5.4
2007 Q3	5.4	6.4	6.0	5.5	5.8	6.5	5.2	6.2	4.5	<b>4.1</b>	5.5	5.4	4.9	5.4
2007 Q4	5.2	5.6	5.9	5.3	5.2	5.7	4.5	6.6	4.6	<b>3.7</b>	5.2	5.1	4.9	5.2

Source: Labour Market Statistics, ONS

Data are seasonally adjusted

**Table 19: UK Monthly Claimant Count Rate (%), 1999-2006**

	<b>1999</b>	<b>2000</b>	<b>2001</b>	<b>2002</b>	<b>2003</b>	<b>2004</b>	<b>2005</b>	<b>2006</b>	<b>2007</b>	<b>2008</b>
January	4.3	3.8	3.3	3.1	3.0	2.9	2.6	2.8	2.9	2.5
February	4.3	3.8	3.2	3.1	3.0	2.8	2.6	2.9	2.9	2.5
March	4.3	3.7	3.2	3.1	3.0	2.8	2.6	2.9	2.8	2.5
April	4.2	3.6	3.2	3.1	3.0	2.8	2.6	2.9	2.8	..
May	4.2	3.6	3.2	3.1	3.0	2.7	2.7	2.9	2.7	..
June	4.2	3.6	3.1	3.1	3.0	2.7	2.7	3.0	2.7	..
July	4.1	3.5	3.1	3.1	3.0	2.7	2.7	3.0	2.7	..
August	4.0	3.5	3.1	3.0	3.0	2.6	2.7	3.0	2.6	..
September	4.0	3.4	3.1	3.0	3.0	2.6	2.8	3.0	2.6	..
October	4.0	3.4	3.1	3.0	2.9	2.6	2.8	3.0	2.6	..
November	3.9	3.4	3.1	3.0	2.9	2.6	2.8	2.9	2.5	..
December	3.8	3.4	3.1	3.0	2.9	2.6	2.9	2.9	2.5	..

Source: Labour Market Statistics, ONS

Data are seasonally adjusted

**Table 20: Monthly Claimant Count by Region (%)**

<b>2006</b>	<b>Jan</b>	<b>Feb</b>	<b>Mar</b>	<b>Apr</b>	<b>May</b>	<b>Jun</b>	<b>Jul</b>	<b>Aug</b>	<b>Sep</b>	<b>Oct</b>	<b>Nov</b>	<b>Dec</b>
UK	2.9	2.9	2.9	2.9	3.0	3.0	3.0	3.0	3.0	2.9	2.9	2.9
NE	3.9	4.0	4.0	4.1	4.1	4.1	4.1	4.1	4.2	4.2	4.2	4.2
NW	3.2	3.3	3.3	3.4	3.4	3.4	3.4	3.4	3.4	3.4	3.4	3.3
YH	3.2	3.3	3.3	3.3	3.3	3.3	3.3	3.3	3.3	3.3	3.3	3.2
EM	2.7	2.8	2.8	2.8	2.9	2.9	2.9	2.9	2.9	2.9	2.8	2.8
WM	3.7	3.8	3.9	3.9	3.9	3.9	3.9	4.0	3.9	3.9	3.9	3.9
E	2.2	2.2	2.2	2.3	2.3	2.3	2.3	2.3	2.3	2.4	2.4	2.3
L	3.5	3.4	3.5	3.5	3.5	3.5	3.4	3.4	3.4	3.4	3.3	3.3
SE	1.8	1.8	1.8	1.8	1.9	1.9	1.8	1.9	1.8	1.8	1.8	1.8
<b>SW</b>	<b>1.7</b>	<b>1.7</b>	<b>1.8</b>	<b>1.8</b>	<b>1.8</b>	<b>1.8</b>	<b>1.8</b>	<b>1.8</b>	<b>1.8</b>	<b>1.8</b>	<b>1.8</b>	<b>1.7</b>
ENG	2.8	2.8	2.9	2.9	2.9	2.9	2.9	2.9	2.9	2.9	2.9	2.8
WAL	3.1	3.1	3.1	3.1	3.1	3.1	3.1	3.0	3.0	3.0	3.0	2.9
SCO	3.1	3.2	3.2	3.2	3.2	3.2	3.2	3.2	3.1	3.1	3.1	2.9
NI	3.2	3.2	3.2	3.2	3.2	3.2	3.2	3.2	3.2	3.2	3.1	3.0
<b>2007</b>	<b>Jan</b>	<b>Feb</b>	<b>Mar</b>	<b>Apr</b>	<b>May</b>	<b>Jun</b>	<b>Jul</b>	<b>Aug</b>	<b>Sep</b>	<b>Oct</b>	<b>Nov</b>	<b>Dec</b>
UK	2.9	2.8	2.8	2.7	2.7	2.7	2.6	2.6	2.6	2.5	2.5	2.5
NE	4.1	4.1	4.1	4.0	4.0	4.0	3.9	3.9	3.9	3.9	3.8	3.8
NW	3.3	3.2	3.2	3.1	3.1	3.1	3.1	3.1	3.1	3.0	3.0	3.0
YH	3.2	3.2	3.1	3.1	3.1	3.0	3.0	3.0	2.9	2.9	2.9	2.8
EM	2.8	2.8	2.7	2.7	2.7	2.6	2.6	2.6	2.5	2.5	2.4	2.4
WM	3.9	3.8	3.7	3.7	3.7	3.6	3.6	3.6	3.6	3.5	3.5	3.4
E	2.3	2.3	2.2	2.2	2.1	2.1	2.1	2.0	2.0	2.0	1.9	1.9
L	3.3	3.2	3.2	3.1	3.0	3.0	3.0	2.9	2.8	2.8	2.8	2.7
SE	1.7	1.7	1.7	1.6	1.6	1.6	1.6	1.5	1.5	1.5	1.5	1.5
<b>SW</b>	<b>1.7</b>	<b>1.7</b>	<b>1.6</b>	<b>1.6</b>	<b>1.6</b>	<b>1.6</b>	<b>1.5</b>	<b>1.5</b>	<b>1.5</b>	<b>1.4</b>	<b>1.4</b>	<b>1.4</b>
ENG	2.8	2.8	2.7	2.7	2.6	2.6	2.6	2.6	2.5	2.5	2.5	2.4
WAL	2.9	2.9	2.9	2.8	2.8	2.8	2.8	2.8	2.7	2.7	2.7	2.7
SCO	3.0	2.9	2.9	2.8	2.7	2.7	2.7	2.7	2.6	2.6	2.6	2.5
NI	2.9	2.9	2.9	2.9	2.8	2.7	2.7	2.7	2.7	2.7	2.7	2.7
<b>2008</b>	<b>Jan</b>	<b>Feb</b>	<b>Mar</b>	<b>Apr</b>	<b>May</b>	<b>Jun</b>	<b>Jul</b>	<b>Aug</b>	<b>Sep</b>	<b>Oct</b>	<b>Nov</b>	<b>Dec</b>
UK	2.5	2.5	2.5	-	-	-	-	-	-	-	-	-
NE	1.4	1.4	1.4	-	-	-	-	-	-	-	-	-
NW	3.0	3.0	3.0	-	-	-	-	-	-	-	-	-
YH	2.8	2.9	2.9	-	-	-	-	-	-	-	-	-
EM	2.4	2.4	2.4	-	-	-	-	-	-	-	-	-
WM	3.4	3.4	3.4	-	-	-	-	-	-	-	-	-
E	1.9	1.9	1.9	-	-	-	-	-	-	-	-	-
L	2.7	2.7	2.7	-	-	-	-	-	-	-	-	-
SE	1.5	1.5	1.4	-	-	-	-	-	-	-	-	-
<b>SW</b>	<b>1.4</b>	<b>1.4</b>	<b>1.4</b>	-	-	-	-	-	-	-	-	-
ENG	2.4	2.4	2.4	-	-	-	-	-	-	-	-	-
WAL	2.7	2.7	2.7	-	-	-	-	-	-	-	-	-
SCO	2.5	2.5	2.5	-	-	-	-	-	-	-	-	-
NI	2.7	2.8	2.8	-	-	-	-	-	-	-	-	-

Source: Labour Market Statistics, ONS

Data are seasonally adjusted

**Table 21: Annual Claimant Count Rate by Region (%)**

	1997	1998	1999	2000	2001	2002	2003	2004	2005	2006	2007
UK	5.3	4.5	4.1	3.6	3.1	3.1	3.0	2.7	2.7	2.9	2.8
NE	7.9	7.0	6.9	6.2	5.6	5.0	4.5	4.0	3.9	4.1	4.3
NW	5.7	5.0	4.6	4.1	3.7	3.5	3.2	2.8	2.9	3.3	3.2
YH	6.0	5.4	5.0	4.3	3.9	3.6	3.3	2.8	2.9	3.3	3.2
EM	5.2	4.5	4.4	4.0	3.7	3.5	3.5	3.3	3.4	3.9	3.8
WM	7.9	7.0	6.9	6.2	5.6	5.0	4.5	4.0	3.9	4.1	4.3
E	4.0	3.2	2.9	2.4	2.0	2.1	2.1	2.0	2.1	2.3	2.2
L	6.2	5.1	4.4	3.7	3.3	3.5	3.6	3.5	3.4	3.4	3.1
SE	3.3	2.6	2.3	1.8	1.5	1.6	1.7	1.6	1.6	1.8	1.6
<b>SW</b>	<b>4.1</b>	<b>3.4</b>	<b>3.0</b>	<b>2.5</b>	<b>2.1</b>	<b>1.9</b>	<b>1.9</b>	<b>1.6</b>	<b>1.6</b>	<b>1.8</b>	<b>1.6</b>
ENG	5.1	4.3	3.9	3.4	3.0	2.9	2.9	2.6	2.6	2.9	2.7
WAL	6.1	5.4	5.0	4.4	3.9	3.5	3.3	3.0	3.0	3.1	3.1
SCO	5.9	5.3	5.0	4.5	3.9	3.8	3.7	3.4	3.2	3.2	2.9
NI	8.0	7.3	6.3	5.3	4.9	4.4	4.1	3.6	3.3	3.2	2.9

Source: Labour Market Statistics, ONS

Data are seasonally adjusted.

**Table 22: Average Earnings Index<sup>1</sup> (2000=100)**

	2003		2004		2005		2006		2007	
	Index	% Change <sup>2</sup>	Index	% Change <sup>2</sup>	Index	% Change <sup>2</sup>	Index	% Change <sup>2</sup>	Index	% Change <sup>2</sup>
Jan	109.9	3.3	114.4	4.1	119.4	4.4	123.3	3.3	129.3	4.9
Feb	109.8	2.5	113.9	3.8	119.7	5.1	125.2	4.5	131.3	4.9
Mar	111.2	4.1	115.4	3.8	120.3	4.2	125.3	4.2	129.7	3.5
Apr	110.8	3.0	115.8	4.5	120.6	4.2	125.5	4.1	129.8	3.4
May	111.2	3.2	116.1	4.4	120.8	4.0	126.0	4.3	130.5	3.6
Jun	111.5	3.2	116.5	4.5	121.0	3.9	127.0	5.0	131.1	3.2
Jul	112.0	3.6	116.9	4.4	122.1	4.4	126.7	3.8	131.5	3.8
Aug	112.3	3.5	117.5	4.6	122.2	4.0	126.8	3.8	132.1	4.2
Sep	112.9	3.7	118.1	4.6	122.5	3.7	127.4	4.0	132.7	4.2
Oct	113.4	3.7	118.7	4.7	122.6	3.2	128.0	4.4	132.7	3.7
Nov	113.7	3.3	118.9	4.6	123.2	3.6	128.1	3.9	133.4	4.2
Dec	114.0	4.0	118.9	4.3	123.9	4.2	128.8	3.9	...	...

Source: Monthly Digest of Statistic, ONS

<sup>1</sup> All employees; data are seasonally adjusted

<sup>2</sup> % change, year on year

**Table 23 Average Gross Weekly Earnings of Full-Time Employees (£)**

	2001	2002	2003	2004	2005	2006	2007
All industries	449.8	472.2	487.1	498.2	516.5	535.0	549.9
Agriculture, hunting & forestry	302.6	336.1	340.5	355.8	364.7	379.7	397.0
Fishing	397.7	350.7	392.7	415.7	440.6	445.1	359.4
Mining & quarrying	581.1	591.7	657.0	617.1	657.9	749.9	757.6
Manufacturing	439.9	455.6	476.5	485.0	508.0	524.2	539.3
Electricity, gas & water supply	532.1	543.0	561.5	579.2	612.2	624.8	630.8
Construction	445.6	466.4	489.8	505.1	524.6	553.4	567.9
Wholesale & retail trade	386.8	403.6	414.6	421.3	425.2	445.6	459.5
Hotels & restaurants	283.1	295.9	311.3	319.1	323.5	343.3	349.2
Transport, storage & communication	443.0	462.3	476.3	494.4	508.0	523.4	546.5
Financial intermediation	628.8	671.0	660.6	667.5	701.3	719.7	757.0
Real estate, renting & bus.activities	533.1	564.4	568.5	573.9	589.3	612.8	632.0
Public admin & defence	437.9	456.7	469.9	497.6	525.0	536.6	549.7
Education	438.8	459.6	481.6	495.9	518.6	532.2	544.8
Health & social work	407.7	427.7	446.8	478.9	503.2	515.9	528.0
Other services	424.0	468.4	486.8	499.5	503.8	524.1	512.5

Source: ONS

Data are not seasonally adjusted

**Table 24: Annual Growth in Average Gross Weekly Earnings (%)**

	1999	2000	2001	2002	2003	2004	2005	2006	2007
All industries	3.9	4.2	5.8	5.0	3.2	2.3	3.7	3.6	2.8
Agriculture, hunting & forestry	4.5	0.1	4.6	11.1	1.3	4.5	2.5	4.1	4.6
Fishing	-2.0	2.8	6.3	-11.8	12.0	5.9	6.0	1.0	-19.3
Mining & quarrying	-2.6	6.8	8.0	1.8	11.0	-6.1	6.6	14.0	1.0
Manufacturing	2.6	3.6	5.4	3.6	4.6	1.8	4.7	3.2	2.9
Electricity, gas & water supply	5.5	4.2	2.2	2.0	3.4	3.2	5.7	2.1	1.0
Construction	5.3	6.1	5.9	4.7	5.0	3.1	3.9	5.5	2.6
Wholesale & retail trade	3.9	3.2	5.1	4.3	2.7	1.6	0.9	4.8	3.1
Hotels & restaurants	4.4	3.9	3.6	4.5	5.2	2.5	1.4	6.1	1.7
Transport, storage & communication	4.3	3.3	3.1	4.4	3.0	3.8	2.8	3.0	4.4
Financial intermediation	4.2	5.2	7.0	6.7	-1.5	1.0	5.1	2.6	5.2
Real estate, renting & business activities	3.8	5.1	8.9	5.9	0.7	0.9	2.7	4.0	3.1
Public admin & defence	3.8	2.8	4.5	4.3	2.9	5.9	5.5	2.2	2.4
Education	3.9	3.0	4.6	4.7	4.8	3.0	4.6	2.6	2.4
Health & social work	5.6	5.5	7.0	4.9	4.5	7.2	5.1	2.5	2.3
Other services	5.4	5.0	4.0	10.5	3.9	2.6	0.9	4.0	-2.2

Source: ONS

Data are not seasonally adjusted

**Table 25: Average Weekly Earnings, Full-Time Employees (£)**

	All industries	Agriculture, hunting & forestry	Fishing	Mining & quarrying	Manufacturing	Electricity, gas & water supply	Construction	Wholesale & retail trade	Hotels & restaurants	Transport, storage & communication	Financial intermediation	Real estate, renting & business activities	Public admin & defence	Education	Health & social work	Other services
<b>Men</b>																
1998	438.3	288.7	378.7	539.3	423.1	504.6	387.2	386.2	286.0	419.8	684.2	506.1	436.3	431.7	448.0	415.8
1999	453.5	300.9	366.0	523.6	431.7	536.1	404.8	402.9	294.9	436.2	713.2	523.0	452.3	449.2	471.9	431.3
2000	471.8	299.7	375.7	559.1	445.6	552.8	429.8	413.5	307.5	451.1	745.5	549.4	463.7	460.4	495.6	463.9
2001	498.6	312.4	0.0	601.4	469.5	568.9	456.4	431.7	320.8	463.9	794.1	601.0	488.4	480.8	532.8	482.4
2002	523.4	350.5	353.4	608.8	482.9	584.7	478.5	453.7	332.9	480.4	855.9	635.3	506.0	504.3	549.9	536.3
2003	539.3	356.2	391.4	671.2	503.2	595.7	503.8	464.4	351.9	493.5	832.1	636.7	522.5	528.8	581.1	562.2
2004	548.1	368.8	426.6	637.1	511.2	607.9	517.8	470.2	345.9	514.0	829.8	635.3	549.0	542.2	624.3	572.1
2005	568.1	381.9	445.7	675.4	533.8	647.3	537.6	469.5	357.2	527.7	872.4	654.9	583.6	568.4	669.5	563.6
2006	589.8	395.2	428.2	783.4	551.4	666.5	569.8	491.1	381.4	541.8	884.9	681.6	589.4	589.2	692.7	582.5
2007	606.1	409.2	313.9	773.0	568.7	678.4	582.6	504.8	382.0	565.7	928.4	702.8	609.8	603.7	699.3	570.1
<b>Women</b>																
1998	315.2	214.8	333.6	362.8	283.7	368.9	281.8	261.1	213.3	325.1	374.8	346.5	326.7	363.1	303.2	301.5
1999	331.2	231.9	..	378.1	299.3	373.6	311.0	270.6	225.7	346.3	391.0	365.3	337.7	377.1	320.0	327.7
2000	344.9	242.0	..	376.4	312.1	395.4	324.5	280.2	231.7	355.3	406.6	381.6	349.0	389.6	337.2	328.4
2001	367.1	253.5	..	437.6	332.2	410.9	343.9	297.2	238.5	372.9	440.5	414.6	357.7	407.1	359.9	343.1
2002	386.8	272.3	..	478.6	350.8	405.1	356.9	310.1	249.8	402.9	463.7	436.3	377.6	425.7	380.1	375.7
2003	400.7	270.8	..	566.5	372.8	426.0	370.8	321.6	262.2	410.0	463.7	446.4	390.9	445.9	394.0	379.1
2004	416.8	290.9	..	496.3	380.8	464.8	392.8	330.9	283.8	423.1	474.1	461.0	420.8	461.8	419.7	398.4
2005	435.7	287.6	..	552.5	404.3	490.2	411.5	343.2	282.4	432.8	500.0	472.8	440.2	484.0	440.3	417.9
2006	450.0	316.1	..	580.3	415.9	486.5	415.7	361.8	295.9	458.1	519.6	490.2	460.0	494.8	448.9	438.3
2007	462.8	337.1	..	661.5	423.8	474.7	438.0	375.5	309.4	476.5	550.3	502.5	469.3	506.5	463.1	424.9

Source: ONS

Data are not seasonally adjusted